

UK Office

Everest Biotech Ltd

Cherwell Innovation Centre
77 Heyford Park
Upper Heyford
Oxfordshire
OX25 5HD
UK

Enquiries:

info@everestbiotech.com

Sales:

sales@everestbiotech.com

Tech support:

support@everestbiotech.com

Tel: +44 (0)1869 238326

www.everestbiotech.com

**Research Use Only. Not for
diagnostic or therapeutic use.**

EB10174 - Goat Anti-ETFA Antibody

Size: 100µg specific antibody in 200µl



Target Protein

Principal Names: electron transfer flavoprotein alpha-subunit, electron transfer flavoprotein, alpha polypeptide, electron-transfer-flavoprotein, alpha polypeptide, EMA, GA2, glutaric aciduria II, MADD, ETFA

Official Symbol: ETFA

Accession Number(s): NP_000117.1; NP_001121188.1

Human GeneID(s): [2108](#)

Non-Human GeneID(s): 110842 (mouse), 300726 (rat)

Important Comments: This antibody is expected to recognize both reported isoforms (NP_000117.1; NP_001121188.1).

Immunogen

Peptide with sequence C-QVADYGIVADLFK, from the C Terminus of the protein sequence according to NP_000117.1; NP_001121188.1.

Please note the [peptide](#) is available for sale.

Purification and Storage

Purified from goat serum by ammonium sulphate precipitation followed by antigen affinity chromatography using the immunizing peptide.

Supplied at 0.5 mg/ml in Tris saline, 0.02% sodium azide, pH7.3 with 0.5% bovine serum albumin.

Aliquot and store at -20°C. Minimize freezing and thawing.

Applications Tested

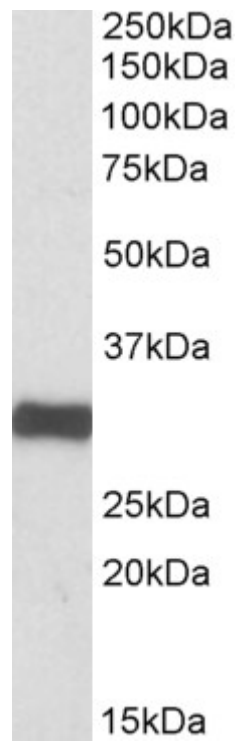
Peptide ELISA: antibody detection limit dilution 1:8000.

Western blot: Approx 30kDa band observed in Human, Mouse and Rat Heart lysates (calculated MW of 30.0kDa according to NP_001121188.1). Recommended concentration: 0.05-0.2µg/ml.

Species Reactivity

Tested: Human, Mouse, Rat

Expected from sequence similarity: Human, Mouse, Rat, Dog, Cow



EB10174 (0.1 µg/ml) staining of Human Heart lysate (35 µg protein in RIPA buffer). Primary incubation was 1 hour. Detected by chemiluminescence.