

## UK Office

### Everest Biotech Ltd

Cherwell Innovation Centre  
77 Heyford Park  
Upper Heyford  
Oxfordshire  
OX25 5HD  
UK

Enquiries:

[info@everestbiotech.com](mailto:info@everestbiotech.com)

Sales:

[sales@everestbiotech.com](mailto:sales@everestbiotech.com)

Tech support:

[support@everestbiotech.com](mailto:support@everestbiotech.com)

Tel: +44 (0)1869 238326

[www.everestbiotech.com](http://www.everestbiotech.com)

**Research Use Only. Not for  
diagnostic or therapeutic use.**

## EB11748 - Goat Anti-ERBB2 / HER2 Antibody

Size: 100µg specific antibody in 200µl



### Target Protein

**Principal Names:** CD340, c-erb B2/neu protein, ERBB2, HER2, HER-2, HER-2/neu, herstatin, metastatic lymph node gene 19 protein, MLN 19, NEU, neuroblastoma/glioblastoma derived oncogene homolog, NGL, p185erbB2, proto-oncogene c-ErbB-2, proto-oncogene Neu, receptor tyrosine-protein kinase erbB-2, TKR1, tyrosine kinase-type cell surface receptor HER2, v-erb-b2 avian erythroblastic leukemia viral oncogene homolog 2 (neuro/glioblastoma derived oncogene homolog), v-erb-b2 erythroblastic leukemia viral oncogene homolog 2, neuro/glioblastoma derived oncogene homolog (avian)

**Official Symbol:** ERBB2

**Accession Number(s):** NP\_004439.2; NP\_001005862.1

**Human GeneID(s):** [2064](#)

**Important Comments:** This antibody is expected to recognize both reported isoforms (NP\_004439.2; NP\_001005862.1). The immunizing peptide represents part of the extracellular domain.

### Immunogen

Peptide with sequence PREYVNARHCLP, from the internal region of the protein sequence according to NP\_004439.2; NP\_001005862.1.

Please note the [peptide](#) is available for sale.

### Purification and Storage

Purified from goat serum by ammonium sulphate precipitation followed by antigen affinity chromatography using the immunizing peptide.

Supplied at 0.5 mg/ml in Tris saline, 0.02% sodium azide, pH7.3 with 0.5% bovine serum albumin.

Aliquot and store at -20°C. Minimize freezing and thawing.

### Applications Tested

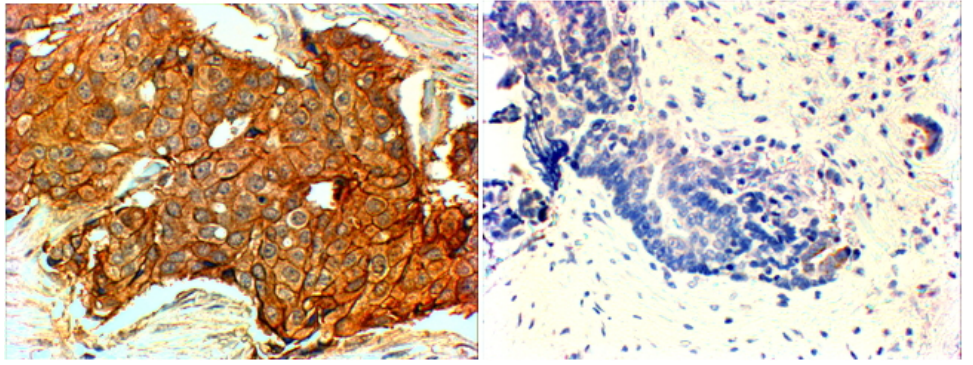
**Peptide ELISA:** antibody detection limit dilution 1:128000.

**IHC:** In paraffin embedded Human breast cancer shows cell membrane and cytoplasm staining in the affected cells of Her+ type and not in triple negative type. Recommended concentration, 4-6µg/ml.

### Species Reactivity

**Tested:** Human

**Expected from sequence similarity:** Human



EB11748 (4 $\mu$ g/ml) staining of paraffin embedded Human breast cancer (Her+ left, triple negative right). Steamed antigen retrieval with citrate buffer pH 6, HRP-staining.