



UK Office

Everest Biotech Ltd

Cherwell Innovation Centre
77 Heyford Park
Upper Heyford
Oxfordshire
OX25 5HD
UK

Enquiries:

info@everestbiotech.com

Sales:

sales@everestbiotech.com

Tech support:

support@everestbiotech.com

Tel: +44 (0)1869 238326

www.everestbiotech.com

**Research Use Only. Not for
diagnostic or therapeutic use.**

EB06610 - Goat Anti-EPM2A (laforin) IP1 Antibody

Size: 100µg specific antibody in 200µl



Target Protein

Principal Names: EPM2AIP1, FLJ11207, KIAA0766, EPM2A (laforin) interacting protein 1, laforin interacting protein 1, EPM2A interacting protein 1

Official Symbol: EPM2AIP1

Accession Number(s): NP_055620.1

Human GeneID(s): [9852](#)

Immunogen

Peptide with sequence WMTPKRSKMEVDC, from the N Terminus of the protein sequence according to NP_055620.1.

Please note the [peptide](#) is available for sale.

Purification and Storage

Purified from goat serum by ammonium sulphate precipitation followed by antigen affinity chromatography using the immunizing peptide.

Supplied at 0.5 mg/ml in Tris saline, 0.02% sodium azide, pH7.3 with 0.5% bovine serum albumin.

Aliquot and store at -20°C. Minimize freezing and thawing.

Applications Tested

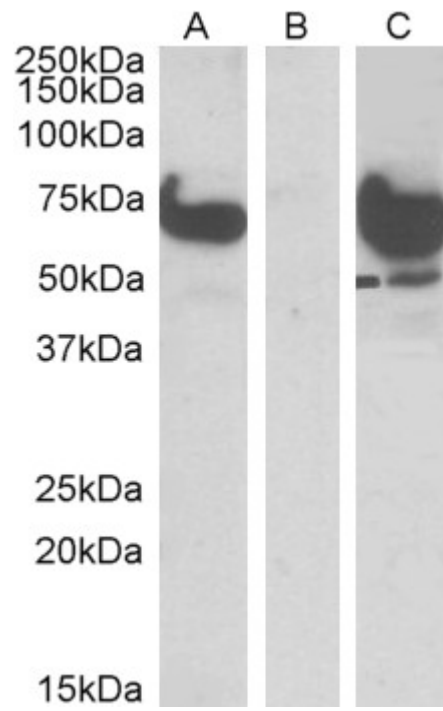
Peptide ELISA: antibody detection limit dilution 1:16000.

Western blot: In transfected HEK293 transiently expressing full-length Human EPM2AIP1 (myc and DYKDDDDK tagged), a band of approx. 75kDa was observed. No bands were observed in mock-transfected HEK293 and the same band was observed using anti- DYKDDDDK tag antibody. Recommended concentration, 1-2µg/ml.

Species Reactivity

Tested: Human

Expected from sequence similarity: Human, Mouse, Rat, Dog, Cow



HEK293 lysate (10ug protein in RIPA buffer) overexpressing Human EPM2AIP1 with DYKDDDDK tag probed with EB06610 (1ug/ml) in Lane A and probed with anti-DYKDDDDK Tag (1/1000) in lane C. Mock-transfected HEK293 probed with EB06610 (1mg/ml) in Lane B. Primary incubations were for 1 hour. Detected by chemiluminescence.