



UK Office

Everest Biotech Ltd

Cherwell Innovation Centre
77 Heyford Park
Upper Heyford
Oxfordshire
OX25 5HD
UK

Enquiries:

info@everestbiotech.com

Sales:

sales@everestbiotech.com

Tech support:

support@everestbiotech.com

Tel: +44 (0)1869 238326

www.everestbiotech.com

**Research Use Only. Not for
diagnostic or therapeutic use.**

EB07144 - Goat Anti-EP1 receptor / PTGER1 Antibody

Size: 100µg specific antibody in 200µl



Target Protein

Principal Names: PTGER1, prostaglandin E receptor 1 (subtype EP1), 42kDa, EP1, PGE receptor, EP1 subtype, prostaglandin E receptor 1, subtype EP1, prostanoid EP1 receptor

Official Symbol: PTGER1

Accession Number(s): NP_000946.2

Human GeneID(s): [5731](#)

Immunogen

Peptide with sequence C-DSRRRWGAHGPRS, from the internal region of the protein sequence according to NP_000946.2.

Please note the [peptide](#) is available for sale.

Purification and Storage

Purified from goat serum by ammonium sulphate precipitation followed by antigen affinity chromatography using the immunizing peptide.

Supplied at 0.5 mg/ml in Tris saline, 0.02% sodium azide, pH7.3 with 0.5% bovine serum albumin.

Aliquot and store at -20°C. Minimize freezing and thawing.

Applications Tested

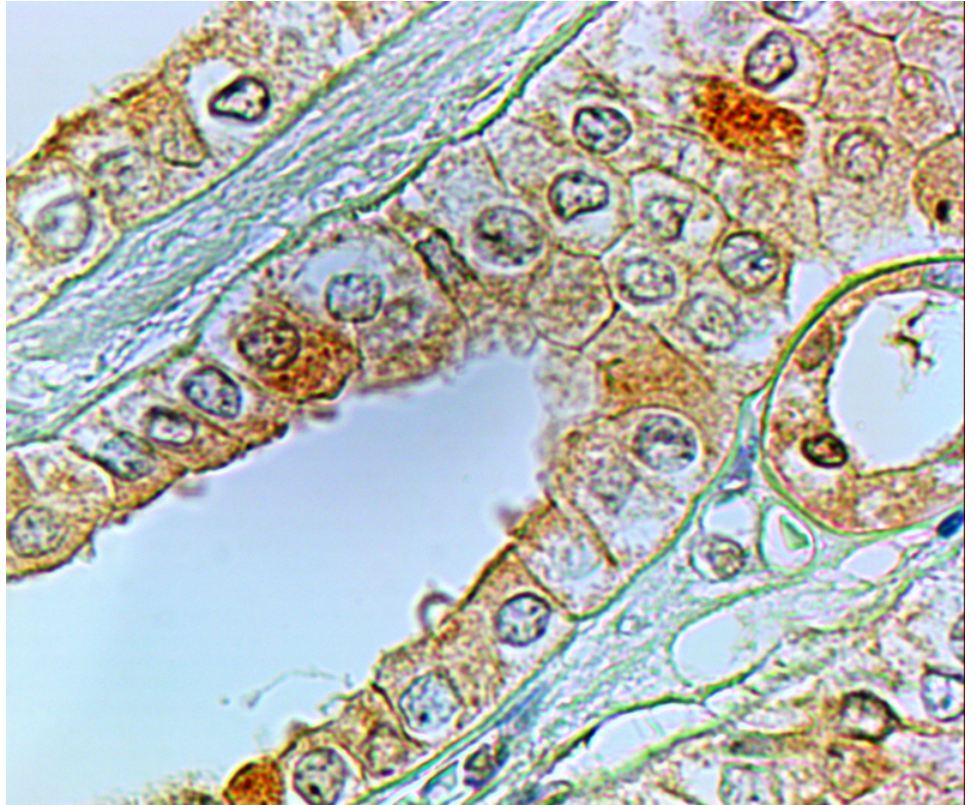
Peptide ELISA: antibody detection limit dilution 1:128000.

IHC: In paraffin embedded Human Kidney shows membranous staining in the epithelial cells of DCT. Recommended concentration: 1-2µg/ml. Paraffin embedded Human Spleen. Recommended concentration: 5µg/ml.

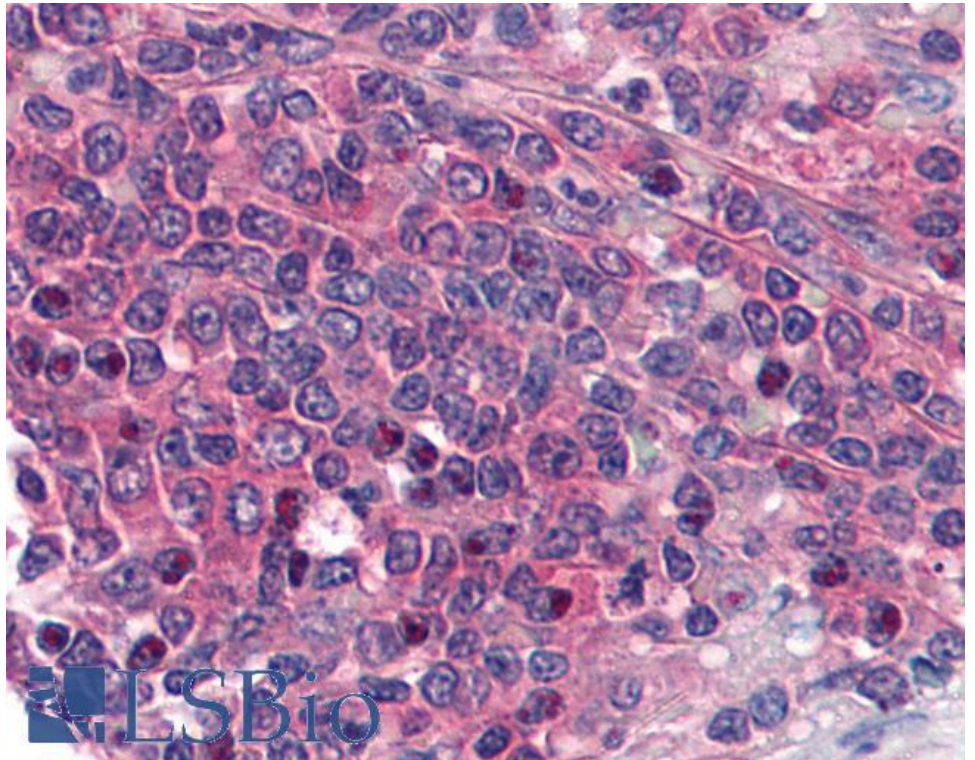
Species Reactivity

Tested: Human

Expected from sequence similarity: Human



EB07144 (2µg/ml) staining of paraffin embedded Human Kidney. Steamed antigen retrieval with citrate buffer pH 6, HRP-staining.



EB07144 (5µg/ml) staining of paraffin embedded Human Spleen. Steamed antigen retrieval with citrate buffer pH 6, AP-staining.