

## UK Office

### Everest Biotech Ltd

Cherwell Innovation Centre  
77 Heyford Park  
Upper Heyford  
Oxfordshire  
OX25 5HD  
UK

Enquiries:

[info@everestbiotech.com](mailto:info@everestbiotech.com)

Sales:

[sales@everestbiotech.com](mailto:sales@everestbiotech.com)

Tech support:

[support@everestbiotech.com](mailto:support@everestbiotech.com)

Tel: +44 (0)1869 238326

[www.everestbiotech.com](http://www.everestbiotech.com)

**Research Use Only. Not for  
diagnostic or therapeutic use.**

## EB10691 - Goat Anti-Endophilin-A2 Antibody

Size: 100µg specific antibody in 200µl



### Target Protein

**Principal Names:** SH3GL1, SH3-domain GRB2-like 1, CNSA1, EEN, MGC111371, SH3D2B, SH3P8, EEN fusion partner of MLL, SH3 domain GRB2-like 1, SH3 domain-containing GRB2-like protein 1, SH3-containing Grb-2-like 1 protein, SH3-containing protein EEN, endophilin-A2, endophilin-2, SH3 domain protein 2B, extra 11-19 leukemia fusion, extra eleven-nineteen leukemia fusion gene protein

**Official Symbol:** SH3GL1

**Accession Number(s):** NP\_003016.1

**Human GeneID(s):** [6455](#)

### Immunogen

Peptide with sequence C-EPFDLGEPEQSN, from the internal region of the protein sequence according to NP\_003016.1.

Please note the [peptide](#) is available for sale.

### Purification and Storage

Purified from goat serum by ammonium sulphate precipitation followed by antigen affinity chromatography using the immunizing peptide.

Supplied at 0.5 mg/ml in Tris saline, 0.02% sodium azide, pH7.3 with 0.5% bovine serum albumin.

Aliquot and store at -20°C. Minimize freezing and thawing.

### Applications Tested

**Peptide ELISA:** antibody detection limit dilution 1:32000.

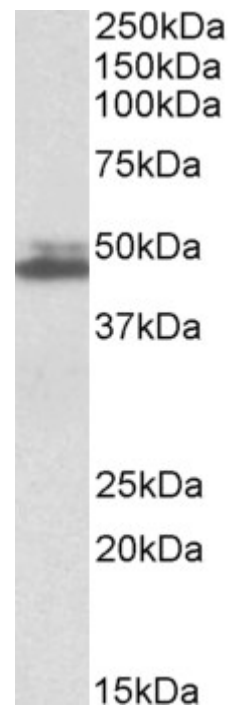
**Western blot:** Approx 48kDa band observed in lysates of cell line K562 (calculated MW of 41.5kDa according to NP\_003016.1. The observed molecular weight corresponds to earlier findings in literature with different antibodies (So et al, Proc Natl Acad Sci U S A. 1997 Mar 18;94(6):2563-8.; PMID: 9122235). Recommended concentration: 0.3-1µg/ml. Primary incubation was 1 hour.

**IHC:** Paraffin embedded Human Small Intestine. Recommended concentration: 5µg/ml.

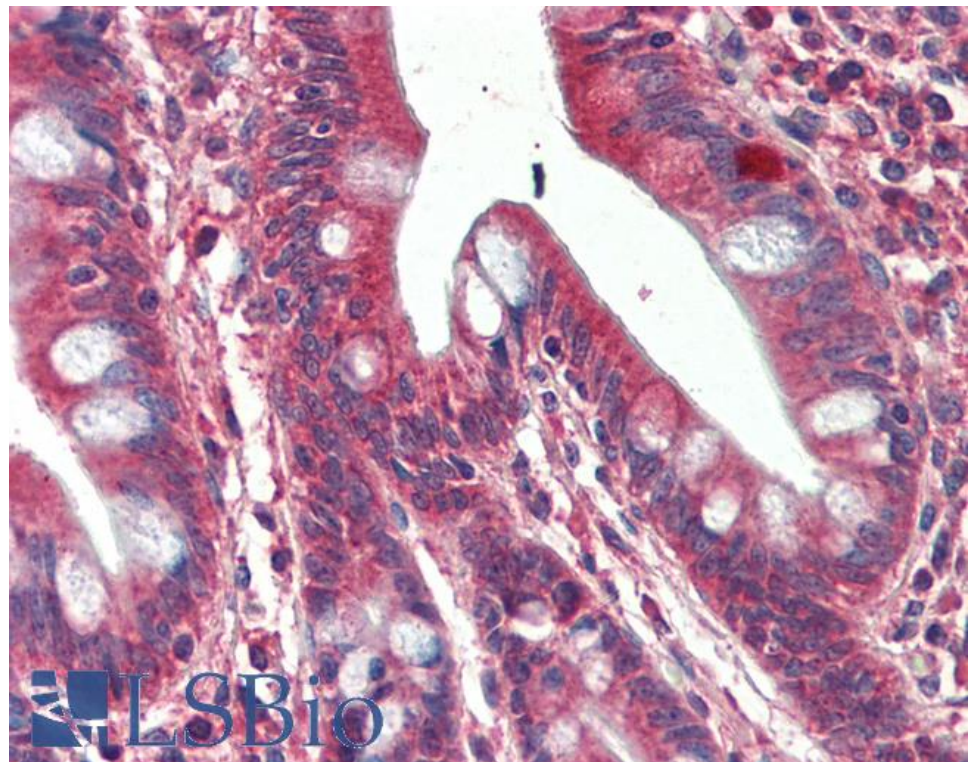
### Species Reactivity

**Tested:** Human

**Expected from sequence similarity:** Human, Dog, Cow



EB10691 (0.3 $\mu$ g/ml) staining of K562 lysate (35 $\mu$ g protein in RIPA buffer). Detected by chemiluminescence.



EB10691 (5 $\mu$ g/ml) staining of paraffin embedded Human Small Intestine. Steamed antigen retrieval with citrate buffer pH 6, AP-staining.