

UK Office

Everest Biotech Ltd

Cherwell Innovation Centre
77 Heyford Park
Upper Heyford
Oxfordshire
OX25 5HD
UK

Enquiries:

info@everestbiotech.com

Sales:

sales@everestbiotech.com

Tech support:

support@everestbiotech.com

Tel: +44 (0)1869 238326

www.everestbiotech.com

**Research Use Only. Not for
diagnostic or therapeutic use.**

EB07292 - Goat Anti-EBAG9 / RCAS1 Antibody

Size: 100µg specific antibody in 200µl



Target Protein

Principal Names: EBAG9, RCAS1, estrogen receptor binding site associated, antigen, 9, HGNC:3123, EB9, PDAF, cancer associated surface antigen, estrogen receptor binding site associated antigen 9

Official Symbol: EBAG9

Accession Number(s): NP_004206.1

Human GeneID(s): [9166](#)

Non-Human GeneID(s): 55960 (mouse), 299864 (rat)

Immunogen

Peptide with sequence C-KEAQRMLMKKEQN, from the C Terminus of the protein sequence according to NP_004206.1.

Please note the [peptide](#) is available for sale.

Purification and Storage

Purified from goat serum by ammonium sulphate precipitation followed by antigen affinity chromatography using the immunizing peptide.

Supplied at 0.5 mg/ml in Tris saline, 0.02% sodium azide, pH7.3 with 0.5% bovine serum albumin.

Aliquot and store at -20°C. Minimize freezing and thawing.

Applications Tested

Peptide ELISA: antibody detection limit dilution 1:64000.

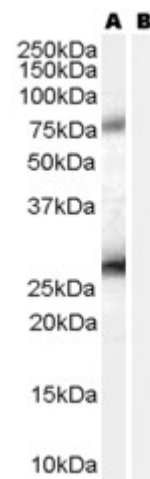
Western blot: Approx 26kDa band observed in lysates of cell lines HEK293 and A431 (calculated MW of 24.4kDa according to NP_004206.1 and NP_004206.1). Recommended concentration: 1-3µg/ml. A minor band of unknown identity was also consistently observed at 75kDa. This band was successfully blocked by incubation with the immunising peptide.

IHC: Paraffin embedded Human Skeletal Muscle. Recommended concentration: 3.75µg/ml.

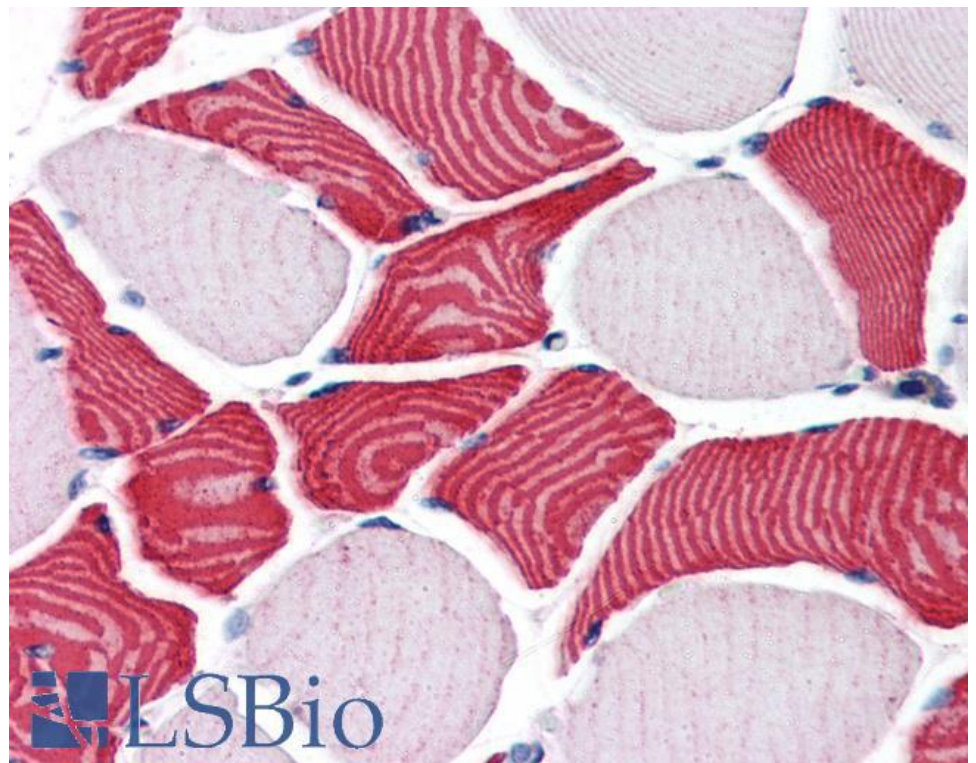
Species Reactivity

Tested: Human

Expected from sequence similarity: Human, Mouse, Rat, Dog



EB07292 (0.2µg/ml) staining of A431 lysate (35µg protein in RIPA buffer) with (B) and without (A) blocking with the immunising peptide. Primary incubation was 1 hour. Detected by chemiluminescence.



EB07292 (3.75µg/ml) staining of paraffin embedded Human Skeletal Muscle. Steamed antigen retrieval with citrate buffer pH 6, AP-staining.