



## UK Office

### Everest Biotech Ltd

Cherwell Innovation Centre  
77 Heyford Park  
Upper Heyford  
Oxfordshire  
OX25 5HD  
UK

Enquiries:

[info@everestbiotech.com](mailto:info@everestbiotech.com)

Sales:

[sales@everestbiotech.com](mailto:sales@everestbiotech.com)

Tech support:

[support@everestbiotech.com](mailto:support@everestbiotech.com)

Tel: +44 (0)1869 238326

[www.everestbiotech.com](http://www.everestbiotech.com)

**Research Use Only. Not for  
diagnostic or therapeutic use.**

## EB05761 - Goat Anti-E2-230K / UBE2O Antibody

Size: 100µg specific antibody in 200µl



### Target Protein

**Principal Names:** UBE2O, ubiquitin-conjugating enzyme E2O, E2-230K, FLJ12878, KIAA1734

**Official Symbol:** UBE2O

**Accession Number(s):** NP\_071349.3

**Human GeneID(s):** [63893](#)

**Non-Human GeneID(s):** 217342 (mouse)

### Immunogen

Peptide with sequence ALLEAGMPECTEDK, from the C Terminus of the protein sequence according to NP\_071349.3.

Please note the [peptide](#) is available for sale.

### Purification and Storage

Purified from goat serum by ammonium sulphate precipitation followed by antigen affinity chromatography using the immunizing peptide.

Supplied at 0.5 mg/ml in Tris saline, 0.02% sodium azide, pH7.3 with 0.5% bovine serum albumin.

Aliquot and store at -20°C. Minimize freezing and thawing.

### Applications Tested

**Peptide ELISA:** antibody detection limit dilution 1:32000.

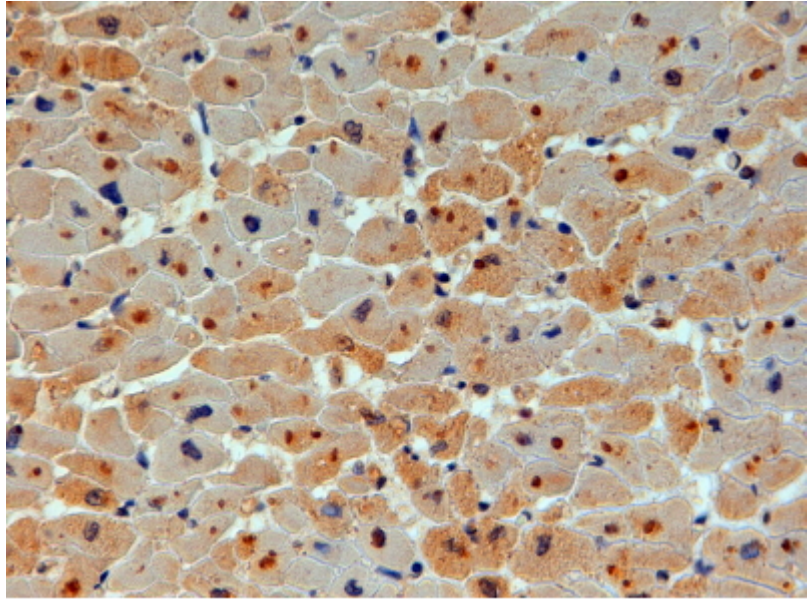
**Western blot:** Preliminary experiments in Human Colon lysates and in lysates of cell line HeLa gave no specific signal but low background (at antibody concentration up to 1µg/ml). We would appreciate any feedback from people in the field - have any results been reported with other antibodies/lysates?

**IHC:** In paraffin embedded Human Heart shows textured staining in some myocardial fibres. Recommended concentration, 4-6µg/ml.

### Species Reactivity

**Tested:** Human

**Expected from sequence similarity:** Human, Mouse, Rat, Dog, Pig, Cow



EB05761 (4µg/ml) staining of paraffin embedded Human Heart. Steamed antigen retrieval with citrate buffer pH 6, HRP-staining.