



UK Office

Everest Biotech Ltd

Cherwell Innovation Centre
77 Heyford Park
Upper Heyford
Oxfordshire
OX25 5HD
UK

Enquiries:

info@everestbiotech.com

Sales:

sales@everestbiotech.com

Tech support:

support@everestbiotech.com

Tel: +44 (0)1869 238326

www.everestbiotech.com

**Research Use Only. Not for
diagnostic or therapeutic use.**

EB05320 - Goat Anti-DUSP14 / MKP6 Antibody

Size: 100µg specific antibody in 200µl



Target Protein

Principal Names: DUSP14, dual specificity phosphatase 14, MKP6, MKP-L, MKP-1 like protein tyrosine phosphatase, OTTHUMP00000164064, OTTHUMP00000164065

Official Symbol: DUSP14

Accession Number(s): NP_008957.1

Human GeneID(s): [11072](#)

Non-Human GeneID(s): 56405 (mouse)

Immunogen

Peptide with sequence CEKESRHLMPYWG1, from the C Terminus of the protein sequence according to NP_008957.1.

Please note the [peptide](#) is available for sale.

Purification and Storage

Purified from goat serum by ammonium sulphate precipitation followed by antigen affinity chromatography using the immunizing peptide.

Supplied at 0.5 mg/ml in Tris saline, 0.02% sodium azide, pH7.3 with 0.5% bovine serum albumin.

Aliquot and store at -20°C. Minimize freezing and thawing.

Applications Tested

Peptide ELISA: antibody detection limit dilution 1:32000.

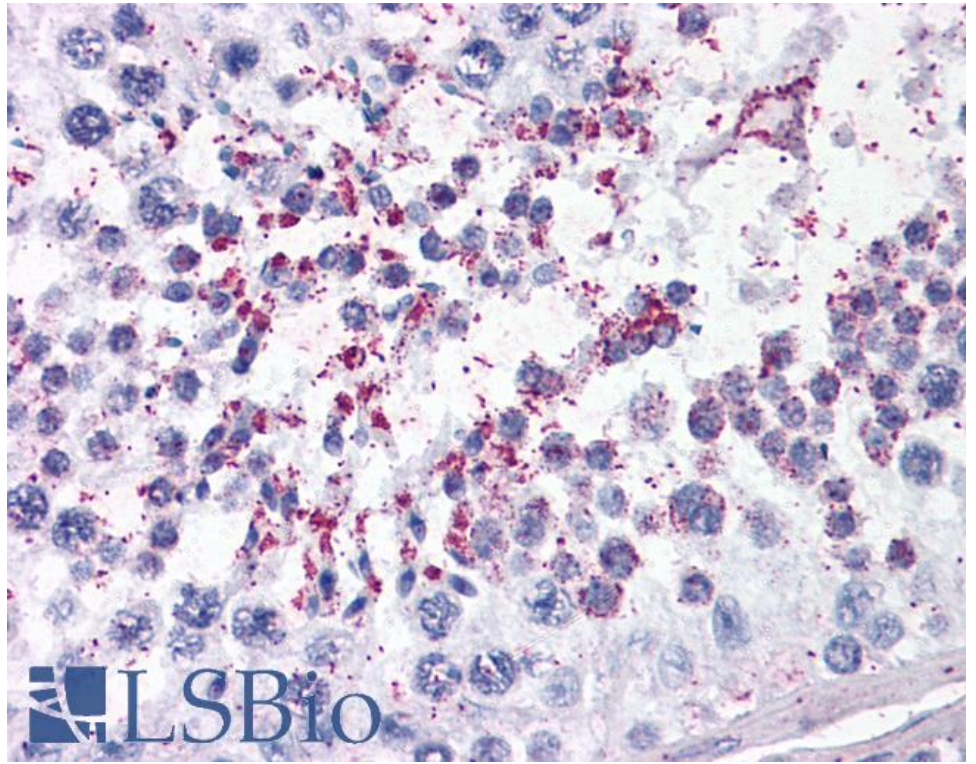
Western blot: No signal obtained yet but low background observed in Human Liver extracts at up to 1µg/ml.

IHC: Paraffin embedded Human Testis. Recommended concentration: 3.5µg/ml.

Species Reactivity

Tested: Human

Expected from sequence similarity: Human, Mouse, Rat, Dog, Cow



EB05320 (3.5µg/ml) staining of paraffin embedded Human Testis. Steamed antigen retrieval with citrate buffer pH 6, AP-staining.