

UK Office

Everest Biotech Ltd

Cherwell Innovation Centre
77 Heyford Park
Upper Heyford
Oxfordshire
OX25 5HD
UK

Enquiries:

info@everestbiotech.com

Sales:

sales@everestbiotech.com

Tech support:

support@everestbiotech.com

Tel: +44 (0)1869 238326

www.everestbiotech.com

**Research Use Only. Not for
diagnostic or therapeutic use.**

EB07737 - Goat Anti-CTDSP1 Antibody

Size: 100µg specific antibody in 200µl



Target Protein

Principal Names: CTDSP1, CTD (carboxy-terminal domain, RNA polymerase II, polypeptide A) small phosphatase 1, NLIIF, SCP1, nuclear LIM interactor-interacting factor, small CTD phosphatase 1

Official Symbol: CTDSP1

Accession Number(s): NP_067021.1; NP_872580.1

Human GeneID(s): [58190](#)

Non-Human GeneID(s): 227292 (mouse), 363249 (rat)

Important Comments: This antibody is expected to recognise both reported isoforms (NP_067021.1 and NP_872580.1).

Immunogen

Peptide with sequence C-RGKGDQKSAASQK, from the internal region of the protein sequence according to NP_067021.1; NP_872580.1.

Please note the [peptide](#) is available for sale.

Purification and Storage

Purified from goat serum by ammonium sulphate precipitation followed by antigen affinity chromatography using the immunizing peptide.

Supplied at 0.5 mg/ml in Tris saline, 0.02% sodium azide, pH7.3 with 0.5% bovine serum albumin.

Aliquot and store at -20°C. Minimize freezing and thawing.

Applications Tested

Peptide ELISA: antibody detection limit dilution 1:32000.

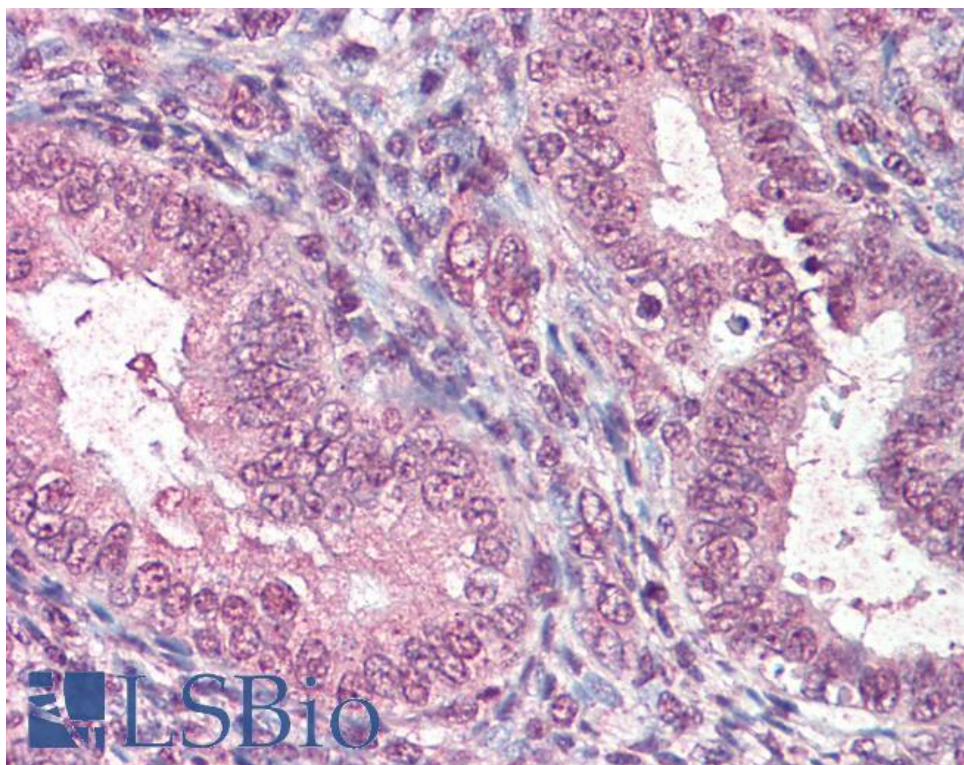
Western blot: Preliminary experiments gave an approx 60kDa band in Human Spleen, Lung and Placenta lysates after 0.3µg/ml antibody staining. Please note that currently we cannot find an explanation in the literature for the band we observe given the calculated size of 29.2kDa according to NP_067021.1 and 29.1kDa according to NP_872580.1. The 60kDa band was successfully blocked by incubation with the immunizing peptide.

IHC: Paraffin embedded Human Uterus. Recommended concentration: 5µg/ml.

Species Reactivity

Tested: Human

Expected from sequence similarity: Human, Mouse, Rat, Dog



EB07737 (5µg/ml) staining of paraffin embedded Human Uterus. Steamed antigen retrieval with citrate buffer pH 6, AP-staining.