



## UK Office

### Everest Biotech Ltd

Cherwell Innovation Centre  
77 Heyford Park  
Upper Heyford  
Oxfordshire  
OX25 5HD  
UK

Enquiries:

[info@everestbiotech.com](mailto:info@everestbiotech.com)

Sales:

[sales@everestbiotech.com](mailto:sales@everestbiotech.com)

Tech support:

[support@everestbiotech.com](mailto:support@everestbiotech.com)

Tel: +44 (0)1869 238326

[www.everestbiotech.com](http://www.everestbiotech.com)

**Research Use Only. Not for  
diagnostic or therapeutic use.**

## EB06849 - Goat Anti-CTDSP1 Antibody

Size: 100µg specific antibody in 200µl



### Target Protein

**Principal Names:** CTDSP1, SCP1, NLIIF, CTD (carboxy-terminal domain, RNA polymerase II, polypeptide A) small phosphatase 1, small CTD phosphatase 1, nuclear LIM interactor-interacting factor, Synaptonemal Complex Protein 1

**Official Symbol:** CTDSP1

**Accession Number(s):** NP\_067021.1; NP\_872580.1; NP\_001193807.1

**Human GeneID(s):** [58190](#)

**Non-Human GeneID(s):** 227292 (mouse), 363249 (rat)

**Important Comments:** This antibody is expected to recognize all three reported isoforms (NP\_067021.1; NP\_872580.1; NP\_001193807.1).

### Immunogen

Peptide with sequence EAKAQDSDKIC, from the internal region of the protein sequence according to NP\_067021.1; NP\_872580.1; NP\_001193807.1.

Please note the [peptide](#) is available for sale.

### Purification and Storage

Purified from goat serum by ammonium sulphate precipitation followed by antigen affinity chromatography using the immunizing peptide.

Supplied at 0.5 mg/ml in Tris saline, 0.02% sodium azide, pH7.3 with 0.5% bovine serum albumin.

Aliquot and store at -20°C. Minimize freezing and thawing.

### Applications Tested

**Peptide ELISA:** antibody detection limit dilution 1:16000.

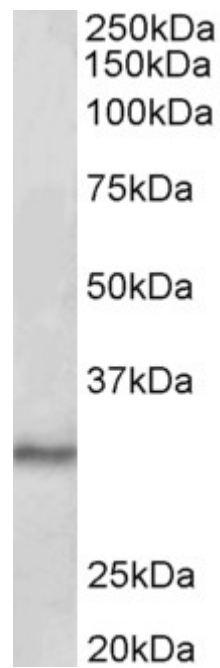
**Western blot:** Approx 30kDa band observed in Mouse Testis lysates (calculated MW of 29.3kDa according to Mouse NP\_694728.1). Recommended concentration: 0.1-0.3µg/ml.

**IHC:** In paraffin embedded Human Tonsil shows nucleolar staining in select cells outside the follicles. Recommended concentration, 5-10µg/ml.

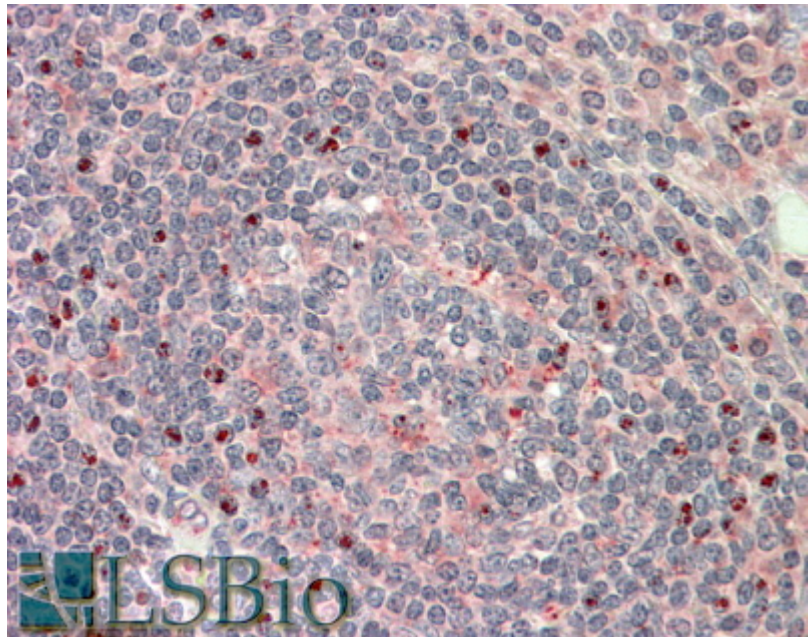
### Species Reactivity

**Tested:** Human, Mouse

**Expected from sequence similarity:** Human, Mouse, Rat, Dog, Cow



EB06849 (0.1µg/ml) staining of Mouse Testis lysate (35µg protein in RIPA buffer). Primary incubation was 1 hour. Detected by chemiluminescence.



EB06849 (5µg/ml) staining of paraffin embedded Human Tonsil. Steamed antigen retrieval with citrate buffer pH 6, AP-staining.