



UK Office

Everest Biotech Ltd

Cherwell Innovation Centre
77 Heyford Park
Upper Heyford
Oxfordshire
OX25 5HD
UK

Enquiries:

info@everestbiotech.com

Sales:

sales@everestbiotech.com

Tech support:

support@everestbiotech.com

Tel: +44 (0)1869 238326

www.everestbiotech.com

**Research Use Only. Not for
diagnostic or therapeutic use.**

EB06127 - Goat Anti-CENTG3 / MRIP1 Antibody

Size: 100µg specific antibody in 200µl



Target Protein

Principal Names: AGAP3, CENTG3, MRIP1, centaurin, gamma 3, MRIP-1, MRIP-1 protein, ArfGAP with GTPase domain, ankyrin repeat and PH domain 3, CRAG, FLJ16146, FLJ34452, CRMP (collapsin response mediator protein) associated, centaurin, gamma 3

Official Symbol: AGAP3

Accession Number(s): NP_114152.3

Human GeneID(s): [116988](#)

Non-Human GeneID(s): 213990 (mouse)

Immunogen

Peptide with sequence C-NPSAELHRSPSLL, from the C Terminus of the protein sequence according to NP_114152.3.

Please note the [peptide](#) is available for sale.

Purification and Storage

Purified from goat serum by ammonium sulphate precipitation followed by antigen affinity chromatography using the immunizing peptide.

Supplied at 0.5 mg/ml in Tris saline, 0.02% sodium azide, pH7.3 with 0.5% bovine serum albumin.

Aliquot and store at -20°C. Minimize freezing and thawing.

Applications Tested

Peptide ELISA: antibody detection limit dilution 1:32000.

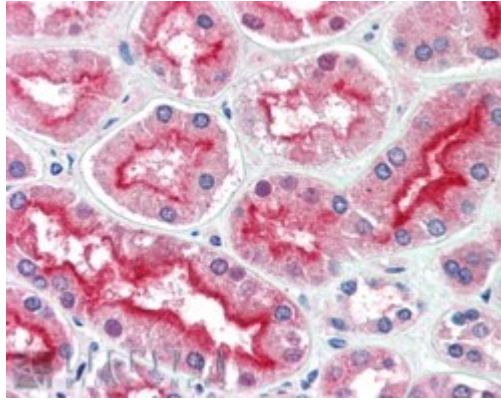
Western blot: Preliminary experiments gave an approx 45kDa band in Human Brain and Human Liver lysates at 1ug/ml. This band was successfully blocked by incubation with the immunising peptide. Please note that currently we cannot find an explanation in the literature for the band we observe given the predicted size of approx. 101kDda according to NP_114152. We would appreciate any feedback from people in the field - have any results been reported with other antibodies/lysates? Have any further splice variants/modified forms been reported?

IHC: In paraffin embedded Human Kidney shows strong staining of brush borders in Proximal Convoluted tubules. Recommended concentration, 5-10µg/ml.

Species Reactivity

Tested: Human

Expected from sequence similarity: Human, Mouse, Rat



EB06127 (5µg/ml) staining of paraffin embedded Human Kidney. Steamed antigen retrieval with citrate buffer pH 6, AP-staining.