



UK Office

Everest Biotech Ltd

Cherwell Innovation Centre
77 Heyford Park
Upper Heyford
Oxfordshire
OX25 5HD
UK

Enquiries:

info@everestbiotech.com

Sales:

sales@everestbiotech.com

Tech support:

support@everestbiotech.com

Tel: +44 (0)1869 238326

www.everestbiotech.com

**Research Use Only. Not for
diagnostic or therapeutic use.**

EB09952 - Goat Anti-CDC6 Antibody

Size: 100µg specific antibody in 200µl



Target Protein

Principal Names: CDC18 (cell division cycle 18, S.pombe, homolog)-like, CDC18L, CDC6 cell division cycle 6 homolog, CDC6-related protein, cell division cycle 6 homolog (S. cerevisiae), cell division cycle 6 protein, HsCDC18, HsCDC6, CDC6

Official Symbol: CDC6

Accession Number(s): NP_001245.1

Human GeneID(s): [990](#)

Immunogen

Peptide with sequence RKSQEITTNSEQRCP, from the internal region of the protein sequence according to NP_001245.1.

Please note the [peptide](#) is available for sale.

Purification and Storage

Purified from goat serum by ammonium sulphate precipitation followed by antigen affinity chromatography using the immunizing peptide.

Supplied at 0.5 mg/ml in Tris saline, 0.02% sodium azide, pH7.3 with 0.5% bovine serum albumin.

Aliquot and store at -20°C. Minimize freezing and thawing.

Applications Tested

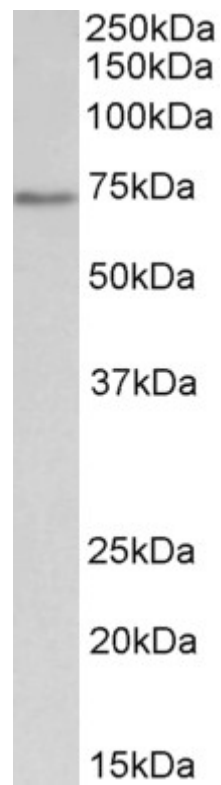
Peptide ELISA: antibody detection limit dilution 1:128000.

Western blot: Approx 70kDa band observed in nuclear lysates of cell lines HeLa and Jurkat (calculated MW of 62.7kDa according to NP_001245.1). Recommended concentration: 0.01-0.03µg/ml.

Species Reactivity

Tested: Human

Expected from sequence similarity: Human



EB09952 (0.01µg/ml) staining of nuclear Jurkat lysate (35µg protein in RIPA buffer). Primary incubation was 1 hour. Detected by chemiluminescence.