

UK Office

Everest Biotech Ltd

Cherwell Innovation Centre
77 Heyford Park
Upper Heyford
Oxfordshire
OX25 5HD
UK

Enquiries:

info@everestbiotech.com

Sales:

sales@everestbiotech.com

Tech support:

support@everestbiotech.com

Tel: +44 (0)1869 238326

www.everestbiotech.com

**Research Use Only. Not for
diagnostic or therapeutic use.**

EB11876 - Goat Anti-Cd97 (mouse) Antibody

Size: 100µg specific antibody in 200µl



Target Protein

Principal Names: Cd97, CD97 antigen, AA409984, TM7LN1, EGF-TM7 receptor, adhesion G protein-coupled receptor E5

Official Symbol: Adgre5

Accession Number(s): NP_036055.2; NP_001156501.1; NP_001156502.1; NP_001156503.1

Non-Human GeneID(s): 26364 (mouse)

Important Comments: This antibody is expected to recognize all reported isoforms (NP_036055.2; NP_001156501.1; NP_001156502.1; NP_001156503.1).

Immunogen

Peptide with sequence C-TSQTRALRSSSES, from the C Terminus of the protein sequence according to NP_036055.2; NP_001156501.1; NP_001156502.1; NP_001156503.1.

Please note the [peptide](#) is available for sale.

Purification and Storage

Purified from goat serum by ammonium sulphate precipitation followed by antigen affinity chromatography using the immunizing peptide.

Supplied at 0.5 mg/ml in Tris saline, 0.02% sodium azide, pH7.3 with 0.5% bovine serum albumin.

Aliquot and store at -20°C. Minimize freezing and thawing.

Applications Tested

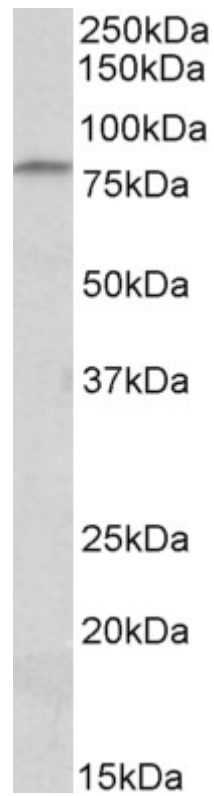
Peptide ELISA: antibody detection limit dilution 1:128000.

Western blot: Approx 80kDa band observed in Mouse Thymus and Spleen lysates (calculated MW of 80.2kDa according to NP_001156503.1). The beta chain is detected as a ~30kDa band in Mouse Colon (transgenic overexpressing Cd76 in intestines) and not in the knock-out. Recommended concentration: 0.3-1µg/ml.

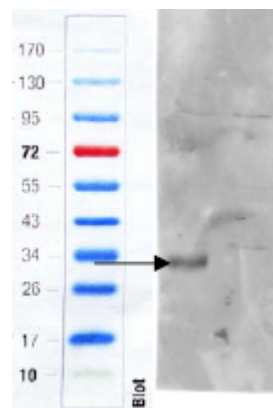
Species Reactivity

Tested: Mouse

Expected from sequence similarity: Mouse



EB11876 (0.3 μ g/ml) staining of Mouse Thymus lysate (35 μ g protein in RIPA buffer). Primary incubation was 1 hour. Detected by chemiluminescence.



EB11876 (1 μ g/ml) staining of Mouse Colon (wt, left lane, knock-out right lane) lysate (35 μ g protein in RIPA buffer). Primary incubation was 1 hour. Detected by infrared fluorescence (Odyssey). Data obtained from anonymous customer