



UK Office

Everest Biotech Ltd

Cherwell Innovation Centre
77 Heyford Park
Upper Heyford
Oxfordshire
OX25 5HD
UK

Enquiries:

info@everestbiotech.com

Sales:

sales@everestbiotech.com

Tech support:

support@everestbiotech.com

Tel: +44 (0)1869 238326

www.everestbiotech.com

**Research Use Only. Not for
diagnostic or therapeutic use.**

EB12534 - Goat Anti-CD13 / ANPEP (aa79-91) Antibody

Size: 100µg specific antibody in 200µl



Target Protein

Principal Names: ANPEP, alanyl (membrane) aminopeptidase, APN, CD13, GP150, LAP1, P150, PEPN, AP-M, AP-N, alanyl aminopeptidase, aminopeptidase M, aminopeptidase N, hAPN, microsomal aminopeptidase, myeloid plasma membrane glycoprotein CD13

Official Symbol: ANPEP

Accession Number(s): NP_001141.2

Human GeneID(s): [290](#)

Immunogen

Peptide with sequence C-TLKPDSYRVTLRP, from the internal region (near N terminus) of the protein sequence according to NP_001141.2.

Please note the [peptide](#) is available for sale.

Purification and Storage

Purified from goat serum by ammonium sulphate precipitation followed by antigen affinity chromatography using the immunizing peptide.

Supplied at 0.5 mg/ml in Tris saline, 0.02% sodium azide, pH7.3 with 0.5% bovine serum albumin.

Aliquot and store at -20°C. Minimize freezing and thawing.

Applications Tested

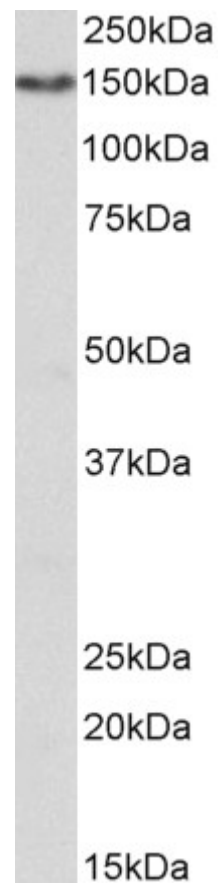
Peptide ELISA: antibody detection limit dilution 1:128000.

Western blot: Approx 150kDa band observed in Human Kidney lysates (calculated MW of 110kDa according to NP_001141.2). The observed molecular weight corresponds to the glycosylated form. Recommended concentration: 1-3µg/ml.

Species Reactivity

Tested: Human

Expected from sequence similarity: Human



EB12534 (1 μ g/ml) staining of Human Kidney lysate (35 μ g protein in RIPA buffer). Primary incubation was 1 hour.
Detected by chemiluminescence.