

## UK Office

### Everest Biotech Ltd

Cherwell Innovation Centre  
77 Heyford Park  
Upper Heyford  
Oxfordshire  
OX25 5HD  
UK

Enquiries:

[info@everestbiotech.com](mailto:info@everestbiotech.com)

Sales:

[sales@everestbiotech.com](mailto:sales@everestbiotech.com)

Tech support:

[support@everestbiotech.com](mailto:support@everestbiotech.com)

Tel: +44 (0)1869 238326

[www.everestbiotech.com](http://www.everestbiotech.com)

**Research Use Only. Not for  
diagnostic or therapeutic use.**

## EB09403 - Goat Anti-CCT3 / TCP1 Antibody

Size: 100µg specific antibody in 200µl



### Target Protein

**Principal Names:** CCT3, chaperonin containing TCP1, subunit 3 (gamma), CCT-gamma, CCTG, PIG48, TCP-1-gamma, TRIC5, OTTHUMP00000025735, T-complex protein 1, gamma subunit, TCP1 (t-complex-1) ring complex, polypeptide 5, chaperonin containing TCP1, subunit 3

**Official Symbol:** CCT3

**Accession Number(s):** NP\_005989.3; NP\_001008883.1; NP\_001008800.1

**Human GeneID(s):** [7203](#)

**Non-Human GeneID(s):** 12462 (mouse), 295230 (rat)

**Important Comments:** This antibody is expected to recognize all reported isoforms (NP\_005989.3; NP\_001008883.1; NP\_001008800.1).

### Immunogen

Peptide with sequence C-GHKKKGDDQSRQGG, from the C-Terminus (near) of the protein sequence according to NP\_005989.3; NP\_001008883.1; NP\_001008800.1.

Please note the [peptide](#) is available for sale.

### Purification and Storage

Purified from goat serum by ammonium sulphate precipitation followed by antigen affinity chromatography using the immunizing peptide.

Supplied at 0.5 mg/ml in Tris saline, 0.02% sodium azide, pH7.3 with 0.5% bovine serum albumin.

Aliquot and store at -20°C. Minimize freezing and thawing.

### Applications Tested

**Peptide ELISA:** antibody detection limit dilution 1:32000.

**Western blot:** Approx 65kDa band observed in Mouse Testis lysates (calculated MW of 60.5kDa according to Human NP\_005989.3 and 60.6kDa according to Mouse NP\_033966.1 and Rat NP\_954522.1). Recommended concentration: 0.01-0.03µg/ml.

**IHC:** Paraffin embedded Human Tonsil. Recommended concentration: 5µg/ml.

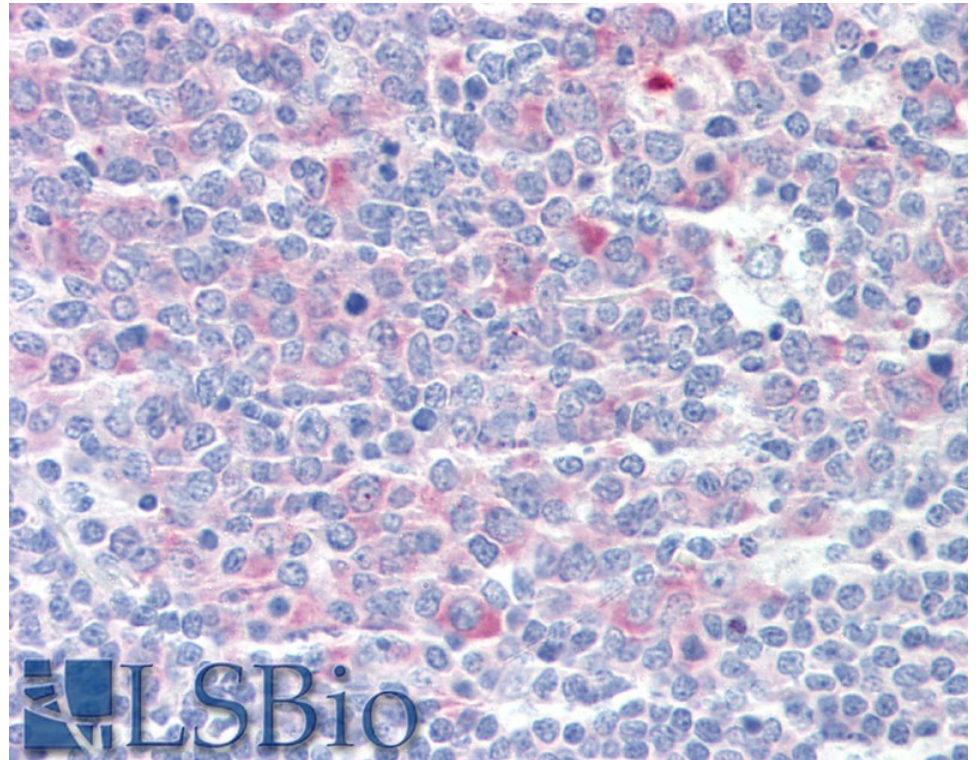
### Species Reactivity

**Tested:** Human, Mouse

**Expected from sequence similarity:** Human, Mouse, Rat, Pig, Cow, Dog



EB09403 (0.01µg/ml) staining of Mouse Testis lysate (35µg protein in RIPA buffer). Primary incubation was 1 hour. Detected by chemiluminescence.



EB09403 (5µg/ml) staining of paraffin embedded Human Tonsil. Steamed antigen retrieval with citrate buffer pH 6, AP-staining.