



## UK Office

### Everest Biotech Ltd

Cherwell Innovation Centre  
77 Heyford Park  
Upper Heyford  
Oxfordshire  
OX25 5HD  
UK

Enquiries:

[info@everestbiotech.com](mailto:info@everestbiotech.com)

Sales:

[sales@everestbiotech.com](mailto:sales@everestbiotech.com)

Tech support:

[support@everestbiotech.com](mailto:support@everestbiotech.com)

Tel: +44 (0)1869 238326

[www.everestbiotech.com](http://www.everestbiotech.com)

**Research Use Only. Not for  
diagnostic or therapeutic use.**

## EB10246 - Goat Anti-CADM1 Antibody

Size: 100µg specific antibody in 200µl



### Target Protein

**Principal Names:** BL2, cell adhesion molecule 1, DKFZp686F1789, IGSF4, IGSF4A, MGC149785, MGC51880, NECL2, Nect-2, RA175, sglGSF, ST17, SYNCAM, synCAM1, TSLC1, TSLC1/Nectin-like 2/IGSF4, CADM1

**Official Symbol:** CADM1

**Accession Number(s):** NP\_055148.3; NP\_001091987.1

**Human GeneID(s):** [23705](#)

**Non-Human GeneID(s):** 54725 (mouse), 363058 (rat)

**Important Comments:** This antibody is expected to recognize both reported isoforms (NP\_055148.3; NP\_001091987.1).

### Immunogen

Peptide with sequence C-NLQTQRYLEVQ, from the internal region of the protein sequence according to NP\_055148.3; NP\_001091987.1.

Please note the [peptide](#) is available for sale.

### Purification and Storage

Purified from goat serum by ammonium sulphate precipitation followed by antigen affinity chromatography using the immunizing peptide.

Supplied at 0.5 mg/ml in Tris saline, 0.02% sodium azide, pH7.3 with 0.5% bovine serum albumin.

Aliquot and store at -20°C. Minimize freezing and thawing.

### Applications Tested

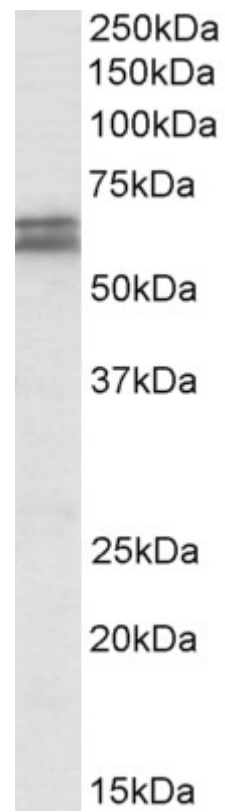
**Peptide ELISA:** antibody detection limit dilution 1:128000.

**Western blot:** Approx 60-65kDa double band observed in Human Colorectal cancer lysates (calculated MW of 48.5kDa according to NP\_055148.3). The observed sizes correspond to glycosylated forms. Recommended concentration: 1-3µg/ml.

### Species Reactivity

**Tested:** Human

**Expected from sequence similarity:** Human, Mouse, Rat, Dog, Cow



EB10246 (1µg/ml) staining of Human Colorectal cancer lysate (35µg protein in RIPA buffer). Primary incubation was 1 hour. Detected by chemiluminescence.