

UK Office

Everest Biotech Ltd

Cherwell Innovation Centre
77 Heyford Park
Upper Heyford
Oxfordshire
OX25 5HD
UK

Enquiries:

info@everestbiotech.com

Sales:

sales@everestbiotech.com

Tech support:

support@everestbiotech.com

Tel: +44 (0)1869 238326

www.everestbiotech.com

**Research Use Only. Not for
diagnostic or therapeutic use.**

EB09852 - Goat Anti-BOD1 Antibody

Size: 100µg specific antibody in 200µl



Target Protein

Principal Names: biorientation defective 1, biorientation of chromosomes in cell division 1, FAM44B, family with sequence similarity 44, member B, BOD1

Official Symbol: BOD1

Accession Number(s): NP_612378.1; NP_001153123.1

Human GeneID(s): [91272](#)

Non-Human GeneID(s): 69556 (mouse), 287173 (rat)

Important Comments: This antibody is expected to recognize isoforms a and b (NP_612378.1; NP_001153123.1).

Immunogen

Peptide with sequence C-NFVSTHLDKQE, from the internal region of the protein sequence according to NP_612378.1; NP_001153123.1.

Please note the [peptide](#) is available for sale.

Purification and Storage

Purified from goat serum by ammonium sulphate precipitation followed by antigen affinity chromatography using the immunizing peptide.

Supplied at 0.5 mg/ml in Tris saline, 0.02% sodium azide, pH7.3 with 0.5% bovine serum albumin.

Aliquot and store at -20°C. Minimize freezing and thawing.

Applications Tested

Peptide ELISA: antibody detection limit dilution 1:16000.

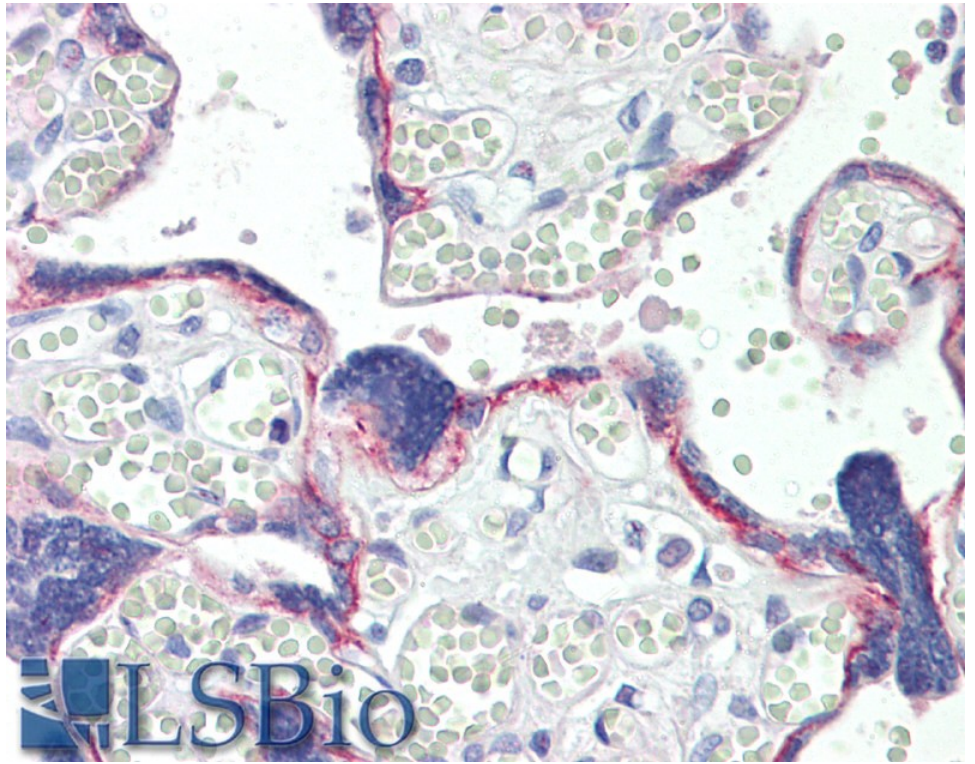
Western blot: Preliminary experiments gave an approx 37kDa band in Human Lung and Testis lysates after 1µg/ml antibody staining. Please note that currently we cannot find an explanation in the literature for the band we observe given the calculated size of 19.2kDa according to NP_612378.1. The 37kDa band was successfully blocked by incubation with the immunizing peptide.

IHC: Paraffin embedded Human Placenta. Recommended concentration: 10µg/ml.

Species Reactivity

Tested: Human

Expected from sequence similarity: Human, Mouse, Rat, Dog



EB09852 (10µg/ml) staining of paraffin embedded Human Placenta. Steamed antigen retrieval with citrate buffer pH 6, AP-staining.