



## UK Office

### Everest Biotech Ltd

Cherwell Innovation Centre  
77 Heyford Park  
Upper Heyford  
Oxfordshire  
OX25 5HD  
UK

Enquiries:

[info@everestbiotech.com](mailto:info@everestbiotech.com)

Sales:

[sales@everestbiotech.com](mailto:sales@everestbiotech.com)

Tech support:

[support@everestbiotech.com](mailto:support@everestbiotech.com)

Tel: +44 (0)1869 238326

[www.everestbiotech.com](http://www.everestbiotech.com)

**Research Use Only. Not for  
diagnostic or therapeutic use.**

## EB05868 - Goat Anti-BERP / RNF22 Antibody

Size: 100µg specific antibody in 200µl



### Target Protein

**Principal Names:** TRIM3, BERP, RNF22, TRIM3, tripartite motif-containing 3, HAC1, RNF97, ring finger protein 22, brain expressed ring finger, tripartite motif protein TRIM3, FLJ16135

**Official Symbol:** TRIM3

**Accession Number(s):** NP\_006449.2; NP\_150594.2

**Human GeneID(s):** [10612](#)

**Non-Human GeneID(s):** 55992 (mouse), 83616 (rat)

**Important Comments:** Both variants (NP\_006449.2; NP\_150594.2;) represent the same protein. This antibody is expected to recognise all three human isoforms of this protein.

### Immunogen

Peptide with sequence AKREDSPGPEVQP-C, from the N Terminus of the protein sequence according to NP\_006449.2; NP\_150594.2.

Please note the [peptide](#) is available for sale.

### Purification and Storage

Purified from goat serum by ammonium sulphate precipitation followed by antigen affinity chromatography using the immunizing peptide.

Supplied at 0.5 mg/ml in Tris saline, 0.02% sodium azide, pH7.3 with 0.5% bovine serum albumin.

Aliquot and store at -20°C. Minimize freezing and thawing.

### Applications Tested

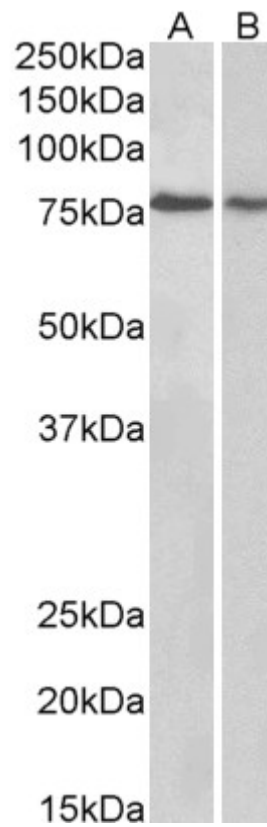
**Peptide ELISA:** antibody detection limit dilution 1:64000.

**Western blot:** Approx 80kDa band observed in Human Brain (Cerebellum) and Rat Brain lysates and approx 85kDa band seen in Mouse Brain (calculated MW of 80.8kDa according to Human NP\_006449.2, Mouse NP\_001272799.1 and Rat NP\_113974.1).  
Recommended concentration: 0.1-0.3µg/ml.

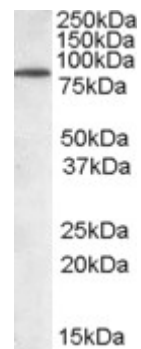
### Species Reactivity

**Tested:** Human, Mouse, Rat

**Expected from sequence similarity:** Human, Mouse, Rat, Dog, Cow



EB05868 (0.3 $\mu$ g/ml) staining of Human Cerebellum (A) and Rat (B) Brain lysate (35 $\mu$ g protein in RIPA buffer). Primary incubation was 1 hour. Detected by chemiluminescence



EB05868 staining (0.05 $\mu$ g/ml) of Mouse Brain lysate (RIPA buffer, 30 $\mu$ g total protein per lane). Primary incubated for 1 hour. Detected by chemiluminescence.