



UK Office

Everest Biotech Ltd

Cherwell Innovation Centre
77 Heyford Park
Upper Heyford
Oxfordshire
OX25 5HD
UK

Enquiries:

info@everestbiotech.com

Sales:

sales@everestbiotech.com

Tech support:

support@everestbiotech.com

Tel: +44 (0)1869 238326

www.everestbiotech.com

**Research Use Only. Not for
diagnostic or therapeutic use.**

EB06075 - Goat Anti-APPL / DIP13alpha Antibody

Size: 100µg specific antibody in 200µl



Target Protein

Principal Names: APPL1, APPL, adaptor protein containing pH domain, PTB domain and leucine zipper motif, PTB domain and leucine zipper motif 1, DIP13alpha, APPL1, signaling adaptor protein DIP13alpha, AKT2 interactor, adaptor protein, phosphotyrosine interaction, PH domain and leucine zipper containing 1

Official Symbol: APPL1

Accession Number(s): NP_036228.1

Human GeneID(s): [26060](#)

Immunogen

Peptide with sequence C-DLGEGGKKRESEA, from the C Terminus of the protein sequence according to NP_036228.1.

Please note the [peptide](#) is available for sale.

Purification and Storage

Purified from goat serum by ammonium sulphate precipitation followed by antigen affinity chromatography using the immunizing peptide.

Supplied at 0.5 mg/ml in Tris saline, 0.02% sodium azide, pH7.3 with 0.5% bovine serum albumin.

Aliquot and store at -20°C. Minimize freezing and thawing.

Applications Tested

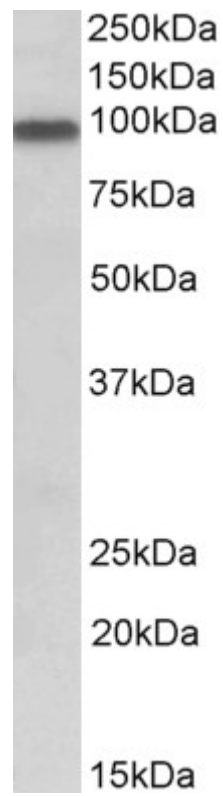
Peptide ELISA: antibody detection limit dilution 1:2000.

Western blot: Approx 90kDa band observed in Human Heart lysates (calculated MW of 79.7kDa according to NP_036228.1). Recommended concentration: 0.3-1µg/ml.

Species Reactivity

Tested: Human

Expected from sequence similarity: Human



EB06075 (0.3 μ g/ml) staining of Human Heart lysate (35 μ g protein in RIPA buffer). Primary incubation was 1 hour. Detected by chemiluminescence.