



UK Office

Everest Biotech Ltd

Cherwell Innovation Centre
77 Heyford Park
Upper Heyford
Oxfordshire
OX25 5HD
UK

Enquiries:

info@everestbiotech.com

Sales:

sales@everestbiotech.com

Tech support:

support@everestbiotech.com

Tel: +44 (0)1869 238326

www.everestbiotech.com

**Research Use Only. Not for
diagnostic or therapeutic use.**

EB07578 - Goat Anti-APOM Antibody

Size: 100µg specific antibody in 200µl



Target Protein

Principal Names: APOM, apolipoprotein M, G3a, HSPC336, MGC22400, NG20, NG20-like protein, G3a, NG20

Official Symbol: APOM

Accession Number(s): NP_061974.2

Human GeneID(s): [55937](#)

Immunogen

Peptide with sequence PRNQEACELSNN, from the C Terminus of the protein sequence according to NP_061974.2.

Please note the [peptide](#) is available for sale.

Purification and Storage

Purified from goat serum by ammonium sulphate precipitation followed by antigen affinity chromatography using the immunizing peptide.

Supplied at 0.5 mg/ml in Tris saline, 0.02% sodium azide, pH7.3 with 0.5% bovine serum albumin.

Aliquot and store at -20°C. Minimize freezing and thawing.

Applications Tested

Peptide ELISA: antibody detection limit dilution 1:8000.

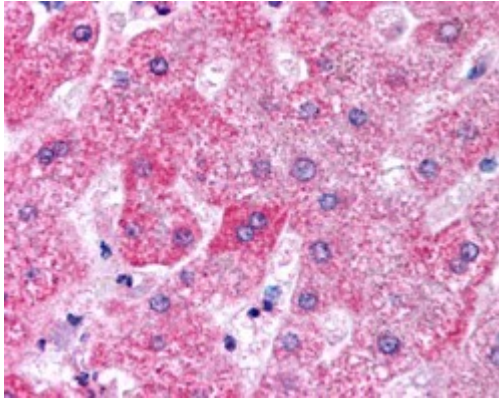
Western blot: Preliminary experiments gave an approx 50kDa band in Human Kidney and Liver lysates after 0.2µg/ml antibody staining. Please note that currently we cannot find an explanation in the literature for the band we observe given the calculated size of 21.3kDa according to NP_061974.2. We do note that ApoM is a glycoprotein which makes a higher size band to be expected. The 50kDa band was successfully blocked by incubation with the immunizing peptide. We would appreciate any feedback from people in the field - have any results been reported with other antibodies/lysates? Have any further splice variants/modified forms been reported?

IHC: In paraffin embedded Human Liver shows strong stain of cytoplasm in select hepatocytes. Recommended concentration, 3-6µg/ml.

Species Reactivity

Tested: Human

Expected from sequence similarity: Human, Dog



EB07578 (5µg/ml) staining of paraffin embedded Human Liver. Steamed antigen retrieval with citrate buffer pH 6, AP-staining.