



## UK Office

### Everest Biotech Ltd

Cherwell Innovation Centre  
77 Heyford Park  
Upper Heyford  
Oxfordshire  
OX25 5HD  
UK

Enquiries:

[info@everestbiotech.com](mailto:info@everestbiotech.com)

Sales:

[sales@everestbiotech.com](mailto:sales@everestbiotech.com)

Tech support:

[support@everestbiotech.com](mailto:support@everestbiotech.com)

Tel: +44 (0)1869 238326

[www.everestbiotech.com](http://www.everestbiotech.com)

**Research Use Only. Not for  
diagnostic or therapeutic use.**

## EB08775 - Goat Anti-Apolipoprotein M (mouse) Antibody

Size: 100µg specific antibody in 200µl



### Target Protein

**Principal Names:** Apom, apolipoprotein M, G3a, NG20, 1190010O19Rik

**Official Symbol:** Apom

**Accession Number(s):** NP\_061286.1

**Non-Human GeneID(s):** 55938 (mouse), 55939 (rat)

### Immunogen

Peptide with sequence C-KGNMELRTEGRPD, from the internal region of the protein sequence according to NP\_061286.1.

Please note the [peptide](#) is available for sale.

### Purification and Storage

Purified from goat serum by ammonium sulphate precipitation followed by antigen affinity chromatography using the immunizing peptide.

Supplied at 0.5 mg/ml in Tris saline, 0.02% sodium azide, pH7.3 with 0.5% bovine serum albumin.

Aliquot and store at -20°C. Minimize freezing and thawing.

### Applications Tested

**Peptide ELISA:** antibody detection limit dilution 1:16000.

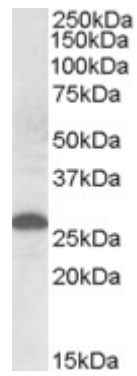
**Western blot:** Approx. 26kDa band observed in Human Placenta lysates (calculated MW of 21.3kDa according to NP\_061286.1). The observed molecular weight corresponds to earlier findings in literature with different antibodies (Xu and Dahlbäck, J Biol Chem. 1999 Oct 29;274(44):31286-90.; PMID: 10531326). Recommended concentration: 0.3-1µg/ml.

**IHC:** Paraffin embedded Human Liver. Recommended concentration: 3.75µg/ml.

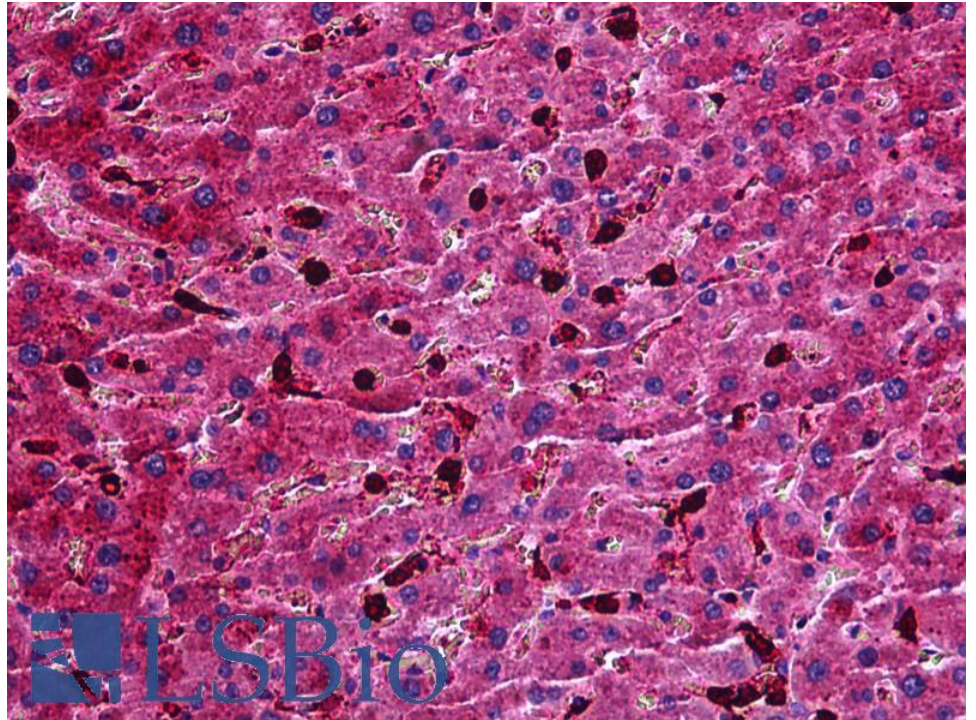
### Species Reactivity

**Tested:** Human

**Expected from sequence similarity:** Mouse, Rat



EB08775 (0.5 $\mu$ g/ml) staining of Human Placenta lysate (35 $\mu$ g protein in RIPA buffer). Primary incubation was 1 hour. Detected by chemiluminescence.



EB08775 (3.75 $\mu$ g/ml) staining of paraffin embedded Human Liver. Steamed antigen retrieval with citrate buffer pH 6, AP-staining.