



UK Office

Everest Biotech Ltd

Cherwell Innovation Centre
77 Heyford Park
Upper Heyford
Oxfordshire
OX25 5HD
UK

Enquiries:

info@everestbiotech.com

Sales:

sales@everestbiotech.com

Tech support:

support@everestbiotech.com

Tel: +44 (0)1869 238326

www.everestbiotech.com

**Research Use Only. Not for
diagnostic or therapeutic use.**

EB08761 - Goat Anti-Apolipoprotein F Antibody

Size: 100µg specific antibody in 200µl



Target Protein

Principal Names: Apolipoprotein F, APOF, Apo-F, DKFZp781G18150, MGC22520

Official Symbol: APOF

Accession Number(s): NP_001629.1

Human GeneID(s): [319](#)

Immunogen

Peptide with sequence C-KSYDLDPGAGSLE, from the C Terminus of the protein sequence according to NP_001629.1.

Please note the [peptide](#) is available for sale.

Purification and Storage

Purified from goat serum by ammonium sulphate precipitation followed by antigen affinity chromatography using the immunizing peptide.

Supplied at 0.5 mg/ml in Tris saline, 0.02% sodium azide, pH7.3 with 0.5% bovine serum albumin.

Aliquot and store at -20°C. Minimize freezing and thawing.

Applications Tested

Peptide ELISA: antibody detection limit dilution 1:32000.

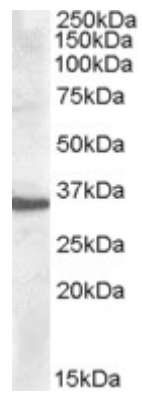
Western blot: Approx. 35kDa band observed in Human Liver lysates (calculated MW of 35.4kDa according to NP_001629.1). Recommended concentration: 0.3-1µg/ml.

IHC: In paraffin embedded Human Liver shows staining of droplets in the cytoplasm of hepatocytes. Recommended concentration, 2.5-3.8µg/ml.

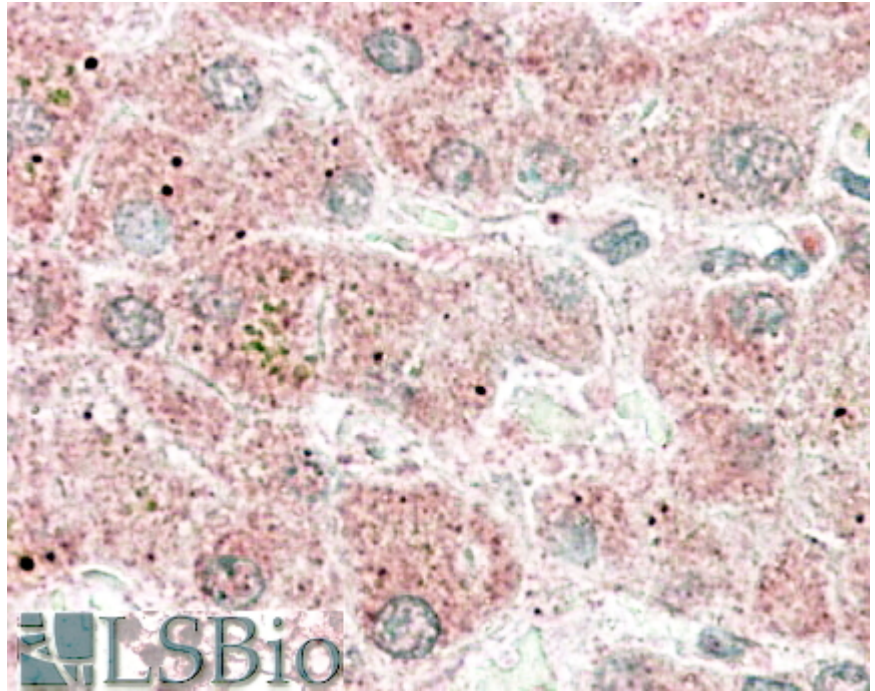
Species Reactivity

Tested: Human

Expected from sequence similarity: Human



EB08761 (0.5µg/ml) staining of Human Liver lysate (35µg protein in RIPA buffer). Primary incubation was 1 hour. Detected by chemiluminescence.



EB08761 (3.8µg/ml) staining of paraffin embedded Human Liver. Steamed antigen retrieval with citrate buffer pH 6, AP-staining.