

## UK Office

### Everest Biotech Ltd

Cherwell Innovation Centre  
77 Heyford Park  
Upper Heyford  
Oxfordshire  
OX25 5HD  
UK

Enquiries:

[info@everestbiotech.com](mailto:info@everestbiotech.com)

Sales:

[sales@everestbiotech.com](mailto:sales@everestbiotech.com)

Tech support:

[support@everestbiotech.com](mailto:support@everestbiotech.com)

Tel: +44 (0)1869 238326

[www.everestbiotech.com](http://www.everestbiotech.com)

**Research Use Only. Not for  
diagnostic or therapeutic use.**

## EB08917 - Goat Anti-APOL3 Antibody

Size: 100µg specific antibody in 200µl



### Target Protein

**Principal Names:** APOL3, apolipoprotein L, 3, APOLIII, CG12-1, OTTHUMP00000028913, TNF-inducible protein CG12-1, apolipoprotein L-III, apolipoprotein L3

**Official Symbol:** APOL3

**Accession Number(s):** NP\_663615.1, NP\_055164.1, NP\_663616.1

**Human GeneID(s):** [80833](#)

**Important Comments:** This antibody is expected to recognize isoform 1 (NP\_663615.1), isoform 2 (NP\_055164.1, NP\_085147.1, NP\_663614.1) and isoform 3 (NP\_663616.1, NP\_663617.1).

### Immunogen

Peptide with sequence ELTQIYQRLNPCHTH, from the C Terminus of the protein sequence according to NP\_663615.1, NP\_055164.1, NP\_663616.1.

Please note the [peptide](#) is available for sale.

### Purification and Storage

Purified from goat serum by ammonium sulphate precipitation followed by antigen affinity chromatography using the immunizing peptide.

Supplied at 0.5 mg/ml in Tris saline, 0.02% sodium azide, pH7.3 with 0.5% bovine serum albumin.

Aliquot and store at -20°C. Minimize freezing and thawing.

### Applications Tested

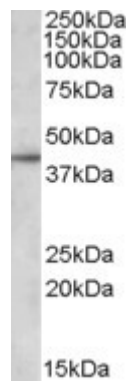
**Peptide ELISA:** antibody detection limit dilution 1:1000.

**Western blot:** Approx. 40kDa band observed in lysates of cell lines DAUDI and MOLT4 (calculated MW of 44.3kDa according to NP\_663615.1). Recommended concentration: 1-3µg/ml.

### Species Reactivity

**Tested:** Human

**Expected from sequence similarity:** Human



EB08917 (1 $\mu$ g/ml) staining of DAUDI lysate (35 $\mu$ g protein in RIPA buffer). Primary incubation was 1 hour.  
Detected by chemiluminescence.