



UK Office

Everest Biotech Ltd

Cherwell Innovation Centre
77 Heyford Park
Upper Heyford
Oxfordshire
OX25 5HD
UK

Enquiries:

info@everestbiotech.com

Sales:

sales@everestbiotech.com

Tech support:

support@everestbiotech.com

Tel: +44 (0)1869 238326

www.everestbiotech.com

**Research Use Only. Not for
diagnostic or therapeutic use.**

EB08916 - Goat Anti-APOL2 Antibody

Size: 100µg specific antibody in 200µl



Target Protein

Principal Names: APOL2, apolipoprotein L, 2, APOL-II, OTTHUMP00000028936, apolipoprotein L-II, apolipoprotein L2

Official Symbol: APOL2

Accession Number(s): NP_112092.1; NP_663612.1

Human GeneID(s): [23780](#)

Important Comments: Both reported isoforms represent identical proteins (NP_112092.1; NP_663612.1).

Immunogen

Peptide with sequence C-TKIHEMLQPGQD, from the C Terminus of the protein sequence according to NP_112092.1; NP_663612.1.

Please note the [peptide](#) is available for sale.

Purification and Storage

Purified from goat serum by ammonium sulphate precipitation followed by antigen affinity chromatography using the immunizing peptide.

Supplied at 0.5 mg/ml in Tris saline, 0.02% sodium azide, pH7.3 with 0.5% bovine serum albumin.

Aliquot and store at -20°C. Minimize freezing and thawing.

Applications Tested

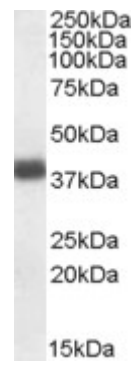
Peptide ELISA: antibody detection limit dilution 1:64000.

Western blot: Approx 37.1kDa band observed in Human Brain (Frontal Cortex) lysates (calculated MW of 38kDa according to NP_112092.1; NP_663612.1). Recommended concentration: 0.03-0.1µg/ml.

Species Reactivity

Tested: Human

Expected from sequence similarity: Human



EB008916 (0.03 μ g/ml) staining of Human Frontal Cortex lysate (35 μ g protein in RIPA buffer). Primary incubation was 1 hour. Detected by chemiluminescence.