

UK Office

Everest Biotech Ltd

Cherwell Innovation Centre
77 Heyford Park
Upper Heyford
Oxfordshire
OX25 5HD
UK

Enquiries:

info@everestbiotech.com

Sales:

sales@everestbiotech.com

Tech support:

support@everestbiotech.com

Tel: +44 (0)1869 238326

www.everestbiotech.com

**Research Use Only. Not for
diagnostic or therapeutic use.**

EB11875-B - Goat Anti-AP2A1 (aa706-727), Biotinylated Antibody

Size: 100µg specific antibody in 200µl



Target Protein

Principal Names: AP2A1, adaptor related protein complex 2 alpha 1 subunit, ADTAA, AP2-ALPHA, CLAPA1, 100 kDa coated vesicle protein A, adapter-related protein complex 2 alpha-1 subunit, adapter-related protein complex 2 subunit alpha-1, adaptin, alpha A, adaptor protein complex AP-2 subunit alpha-1, adaptor related protein complex 2, alpha 1 subunit, adaptor-related protein complex 2 subunit alpha-1, adaptor-related protein complex 2, alpha 1 subunit, alpha-adaptin A, alpha1-adaptin, clathrin assembly protein complex 2 alpha-A large chain, clathrin-associated/assembly/adaptor protein, large, alpha 1, plasma membrane adaptor HA2/AP2 adaptin alpha A subunit

Official Symbol: AP2A1

Accession Number(s): NP_055018.2

Human GeneID(s): [160](#)

Important Comments: This antibody is expected to recognize reported isoform 1 (NP_055018.2) only.

Immunogen

Peptide with sequence CELEPPAPESPMALLADPAPAAD., from the internal region of the protein sequence according to NP_055018.2.

Please note the [peptide](#) is available for sale.

Purification and Storage

Purified from goat serum by ammonium sulphate precipitation followed by antigen affinity chromatography using the immunizing peptide.

Supplied at 0.5 mg/ml in Tris saline, 0.02% sodium azide, pH7.3 with 0.5% bovine serum albumin.

Aliquot and store at -20°C. Minimize freezing and thawing.

Applications Tested

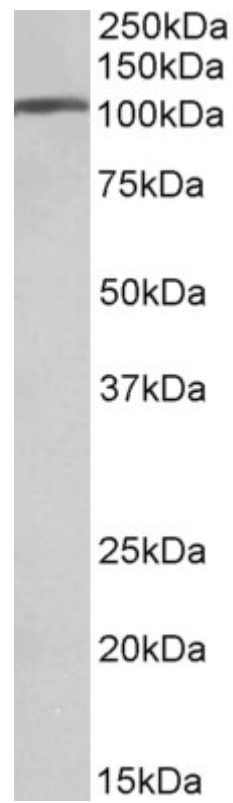
Peptide ELISA: antibody detection limit dilution 1:128000.

Western blot: Approx 110kDa band observed in Human Brain (Frontal Cortex) lysates (calculated MW of 108kDa according to NP_055018.2). The same band is observed in Mouse Brain, but not in Mouse Liver or Mouse Kidney lysates. See non-biotinylated parental product's datasheet for further QC data. Recommended concentration: 0.01-0.03µg/ml.

Species Reactivity

Tested: Human, Mouse

Expected from sequence similarity: Human, Mouse, Rat, Pig, Cow



Biotinylated EB11875 (0.01 μ g/ml) staining of Human Frontal Cortex lysate (35 μ g protein in RIPA buffer). Primary incubation was 1 hour. Detected by chemiluminescence.