



UK Office

Everest Biotech Ltd

Cherwell Innovation Centre
77 Heyford Park
Upper Heyford
Oxfordshire
OX25 5HD
UK

Enquiries:

info@everestbiotech.com

Sales:

sales@everestbiotech.com

Tech support:

support@everestbiotech.com

Tel: +44 (0)1869 238326

www.everestbiotech.com

**Research Use Only. Not for
diagnostic or therapeutic use.**

EB07245-T - Goat Anti-Amphiphysin / AMPH Antibody - Trial

Size: 20µg specific antibody in 40µl



Target Protein

Principal Names: AMPH, amphiphysin, amphiphysin (Stiff-Man syndrome with breast cancer 128kDa autoantigen), HGNC:471, AMPH1

Official Symbol: AMPH

Accession Number(s): NP_001626.1; NP_647477.1

Human GeneID(s): [273](#)

Non-Human GeneID(s): 218038 (mouse)

Important Comments: This antibody is expected to recognise both reported isoforms (NP_001626.1 and NP_647477.1).

Immunogen

Peptide with sequence C-KRKDESRISKAE, from the internal region of the protein sequence according to NP_001626.1; NP_647477.1.

Please note the [peptide](#) is available for sale.

Purification and Storage

Purified from goat serum by ammonium sulphate precipitation followed by antigen affinity chromatography using the immunizing peptide.

Supplied at 0.5 mg/ml in Tris saline, 0.02% sodium azide, pH7.3 with 0.5% bovine serum albumin.

Aliquot and store at -20°C. Minimize freezing and thawing.

Applications Tested

Peptide ELISA: antibody detection limit dilution 1:16000.

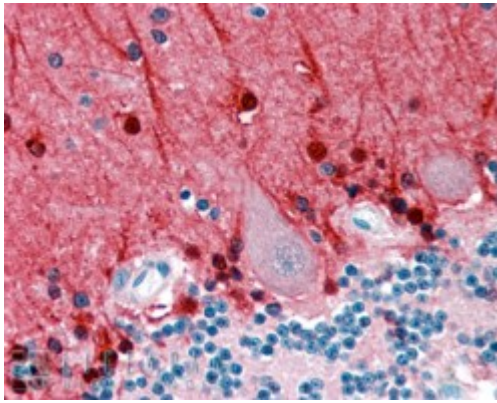
Western blot: Approx 125kDa band observed in mouse brain lysates (calculated MW of 76.3kDa according to NP_001626.1). The observed molecular weight corresponds to earlier findings in literature with different antibodies (Wigge et al, Mol Biol Cell. 1997 Oct;8(10):2003-15.; PMID: 9348539). Recommended concentration: 0.1-0.5µg/ml. A minor band of unknown identity was also consistently observed at 45kDa. This band was successfully blocked by incubation with the immunising peptide. We would appreciate any feedback from people in the field - have any results been reported with other antibodies/lysates? Have any further splice variants/modified forms been reported?

IHC: In paraffin embedded Human Cerebellum shows nuclear and fibrous staining. Recommended concentration, 2-4µg/ml.

Species Reactivity

Tested: Human, Mouse

Expected from sequence similarity: Human, Mouse, Rat, Dog



EB07245 (2.5µg/ml) staining of paraffin embedded Human Cerebellum. Steamed antigen retrieval with citrate buffer pH 6, AP-staining.



EB07245 (0.5µg/ml) staining of mouse brain lysate (35µg protein in RIPA buffer). Primary incubation was 1 hour. Detected by chemiluminescence.