



UK Office

Everest Biotech Ltd

Cherwell Innovation Centre
77 Heyford Park
Upper Heyford
Oxfordshire
OX25 5HD
UK

Enquiries:

info@everestbiotech.com

Sales:

sales@everestbiotech.com

Tech support:

support@everestbiotech.com

Tel: +44 (0)1869 238326

www.everestbiotech.com

**Research Use Only. Not for
diagnostic or therapeutic use.**

EB09049 - Goat Anti-ALOX15 Antibody

Size: 100µg specific antibody in 200µl



Target Protein

Principal Names: ALOX15, arachidonate 15-lipoxygenase, 15-LOX-1, 15-LOX2

Official Symbol: ALOX15

Accession Number(s): NP_001131.3

Human GeneID(s): [246](#)

Immunogen

Peptide with sequence C-HYKTDVAVKDDPE, from the internal region of the protein sequence according to NP_001131.3.

Please note the [peptide](#) is available for sale.

Purification and Storage

Purified from goat serum by ammonium sulphate precipitation followed by antigen affinity chromatography using the immunizing peptide.

Supplied at 0.5 mg/ml in Tris saline, 0.02% sodium azide, pH7.3 with 0.5% bovine serum albumin.

Aliquot and store at -20°C. Minimize freezing and thawing.

Applications Tested

Peptide ELISA: antibody detection limit dilution 1:32000.

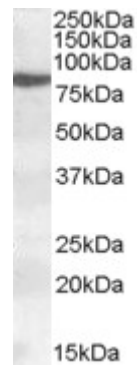
Western blot: Approx. 80kDa band observed in nuclear lysates of cell line HeLa (calculated MW of 74.8kDa according to NP_001131.3). Recommended concentration: 0.2-0.5µg/ml. Primary incubation was 1 hour.

IHC: Paraffin embedded Human Skeletal Muscle and Kidney. Recommended concentration: 2µg/ml.

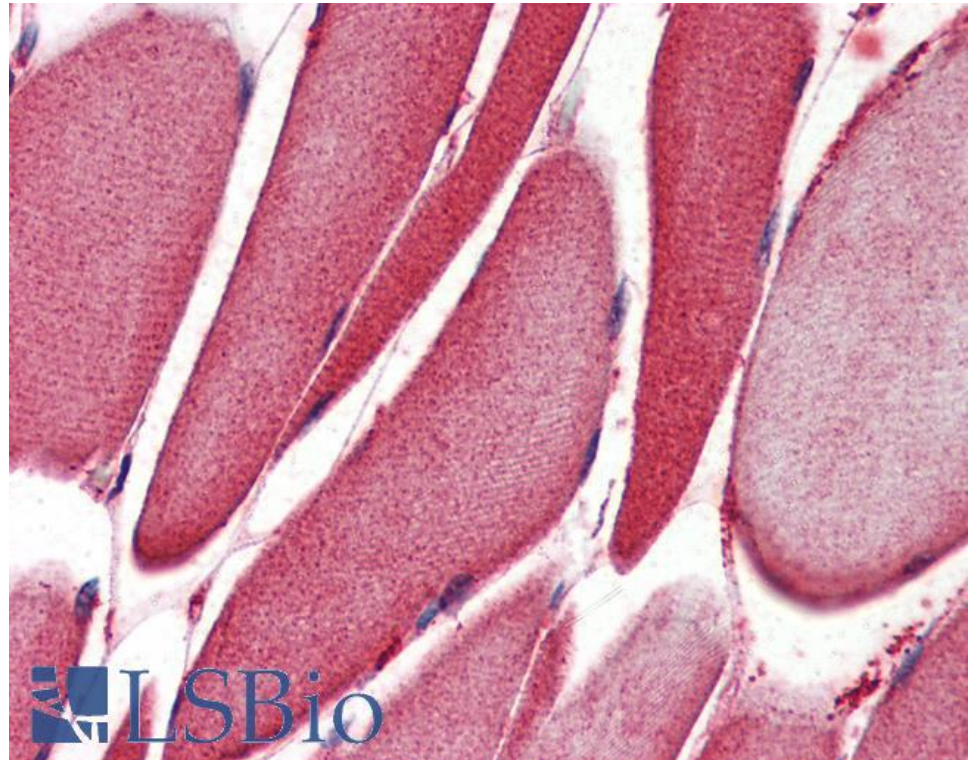
Species Reactivity

Tested: Human

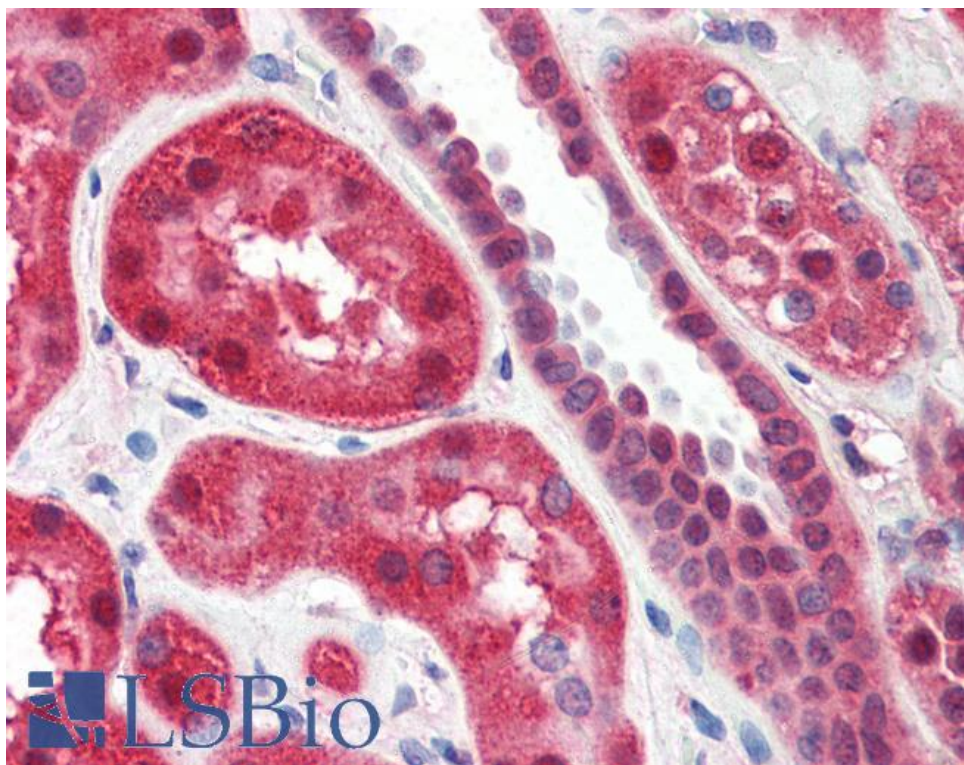
Expected from sequence similarity: Human



EB09049 (0.2 μ g/ml) staining of nuclear HeLa lysate (35 μ g protein in RIPA buffer). Detected by chemiluminescence.



EB09049 (2 μ g/ml) staining of paraffin embedded Human Skeletal Muscle. Steamed antigen retrieval with citrate buffer pH 6, AP-staining.



EB09049 (2µg/ml) staining of paraffin embedded Human Kidney. Steamed antigen retrieval with citrate buffer pH 6, AP-staining.