

## UK Office

### Everest Biotech Ltd

Cherwell Innovation Centre  
77 Heyford Park  
Upper Heyford  
Oxfordshire  
OX25 5HD  
UK

Enquiries:

[info@everestbiotech.com](mailto:info@everestbiotech.com)

Sales:

[sales@everestbiotech.com](mailto:sales@everestbiotech.com)

Tech support:

[support@everestbiotech.com](mailto:support@everestbiotech.com)

Tel: +44 (0)1869 238326

[www.everestbiotech.com](http://www.everestbiotech.com)

**Research Use Only. Not for  
diagnostic or therapeutic use.**

## EB06562 - Goat Anti-AKT3 Antibody

Size: 100µg specific antibody in 200µl



### Target Protein

**Principal Names:** AKT3, PKBG, PRKBG, STK-2, RAC-gamma, RAC-PK-gamma, DKFZP434N0250, v-akt murine thymoma viral oncogene homolog 3 (protein kinase B, gamma), protein kinase B gamma, serine threonine protein kinase, Akt-3, RAC-gamma serine/threonine protein kinase

**Official Symbol:** AKT3

**Accession Number(s):** NP\_005456.1; NP\_859029.1

**Human GeneID(s):** [10000](#)

**Important Comments:** This antibody is expected to recognise an epitope corresponding to aa 119-133 of both isoforms of human AKT3 protein. This antibody does not cross-react with human AKT1/2. Reported variants represent identical protein (NP\_859029.1; NP\_001193658.1).

### Immunogen

Peptide with sequence CSPTSQIDNIGEEEM, from the internal region of the protein sequence according to NP\_005456.1; NP\_859029.1.

Please note the [peptide](#) is available for sale.

### Purification and Storage

Purified from goat serum by ammonium sulphate precipitation followed by antigen affinity chromatography using the immunizing peptide.

Supplied at 0.5 mg/ml in Tris saline, 0.02% sodium azide, pH7.3 with 0.5% bovine serum albumin.

Aliquot and store at -20°C. Minimize freezing and thawing.

### Applications Tested

**Peptide ELISA:** antibody detection limit dilution 1:16000.

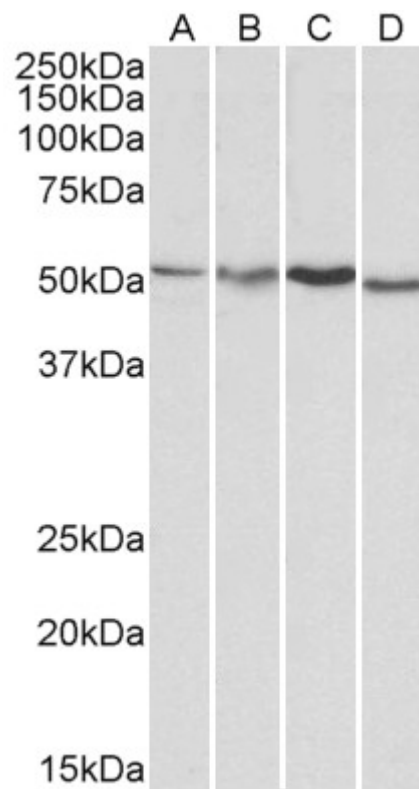
**Western blot:** A 50-55kDa band observed in lysates of cell lines HepG2 and Jurkat and in Mouse and Rat Brain lysates (calculated MW of 54.0kDa according to NP\_859029.1). Recommended concentration: 1-3µg/ml.

**IHC:** Paraffin embedded Human Prostate and Heart. Recommended concentration: 5µg/ml.

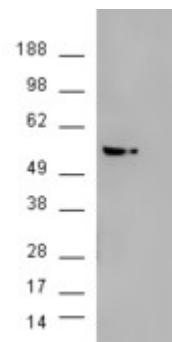
### Species Reactivity

**Tested:** Human, Mouse, Rat

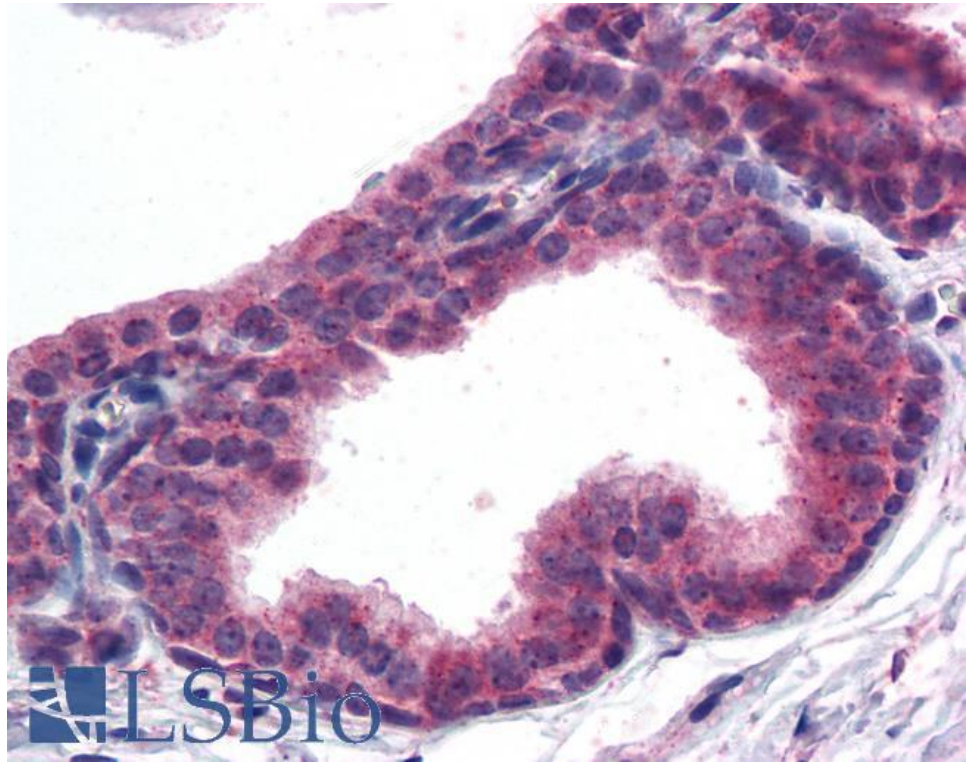
**Expected from sequence similarity:** Human, Mouse, Rat, Dog, Cow



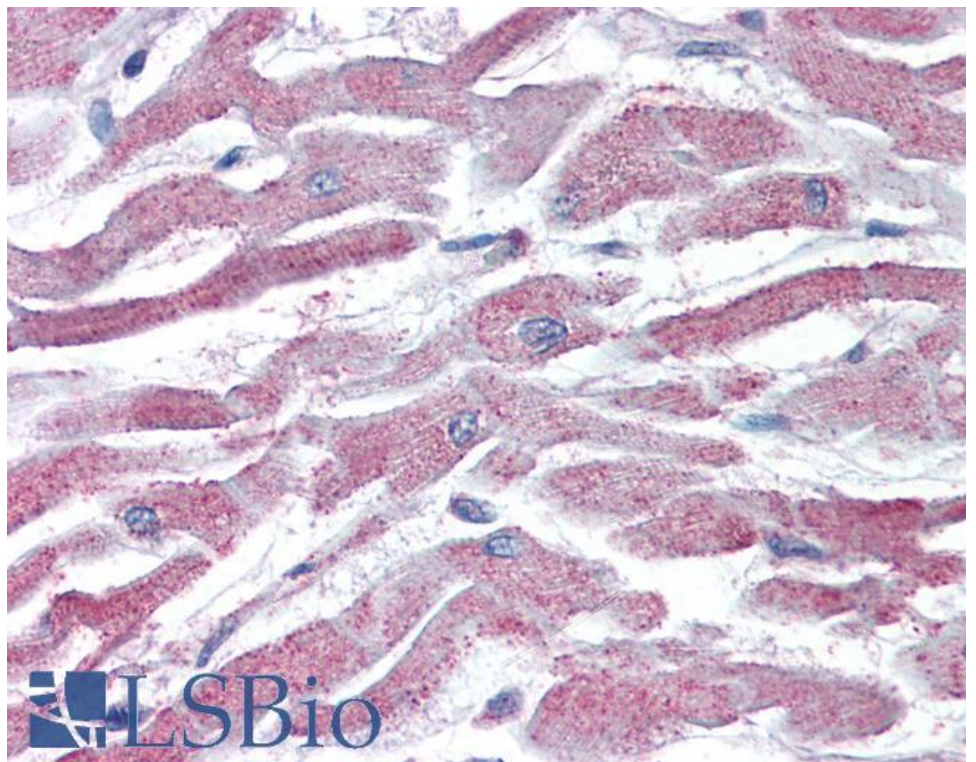
EB06562 (1 $\mu$ g/ml) staining of HepG2 (A), Jurkat (B), Mouse Brain (C) and Rat Brain (D) lysates (35 $\mu$ g protein in RIPA buffer). Primary incubation was 1 hour. Detected by chemiluminescence.



HEK293 overexpressing AKT3 (RC224750) and probed with EB06562 (mock transfection in second lane), tested by Origene.



EB06562 (5µg/ml) staining of paraffin embedded Human Prostate. Steamed antigen retrieval with citrate buffer pH 6, AP-staining.



EB06562 (5µg/ml) staining of paraffin embedded Human Heart. Steamed antigen retrieval with citrate buffer pH 6, AP-staining.