



UK Office

Everest Biotech Ltd

Cherwell Innovation Centre
77 Heyford Park
Upper Heyford
Oxfordshire
OX25 5HD
UK

Enquiries:

info@everestbiotech.com

Sales:

sales@everestbiotech.com

Tech support:

support@everestbiotech.com

Tel: +44 (0)1869 238326

www.everestbiotech.com

**Research Use Only. Not for
diagnostic or therapeutic use.**

EB10957 - Goat Anti-AES Antibody

Size: 100µg specific antibody in 200µl



Target Protein

Principal Names: AES, amino-terminal enhancer of split, AES-1, AES-2, ESP1, GRG, GRG5, TLE5, amino enhancer of split, gp130-associated protein GAM

Official Symbol: AES

Accession Number(s): NP_945320.1; NP_001121.2; NP_945321.1

Human GeneID(s): [166](#)

Non-Human GeneID(s): 14797 (mouse), 29466 (rat)

Important Comments: This antibody is expected to recognize all reported isoforms (NP_945320.1; NP_001121.2; NP_945321.1).

Immunogen

Peptide with sequence SHLPQQLKFTTSD-C, from the N Terminus of the protein sequence according to NP_945320.1; NP_001121.2; NP_945321.1.

Please note the [peptide](#) is available for sale.

Purification and Storage

Purified from goat serum by ammonium sulphate precipitation followed by antigen affinity chromatography using the immunizing peptide.

Supplied at 0.5 mg/ml in Tris saline, 0.02% sodium azide, pH7.3 with 0.5% bovine serum albumin.

Aliquot and store at -20°C. Minimize freezing and thawing.

Applications Tested

Peptide ELISA: antibody detection limit dilution 1:64000.

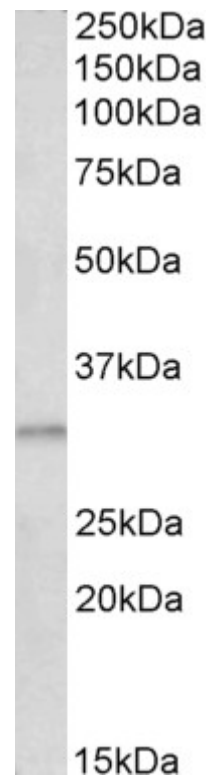
Western blot: Approx 30kDa band observed in Human Brain (Cerebellum and Cerebral Cortex) lysates (calculated MW of 29.1kDa according to NP_945320.1). Recommended concentration: 0.3-1µg/ml.

IHC: Paraffin embedded Human Colon. Recommended concentration: 3.75µg/ml.

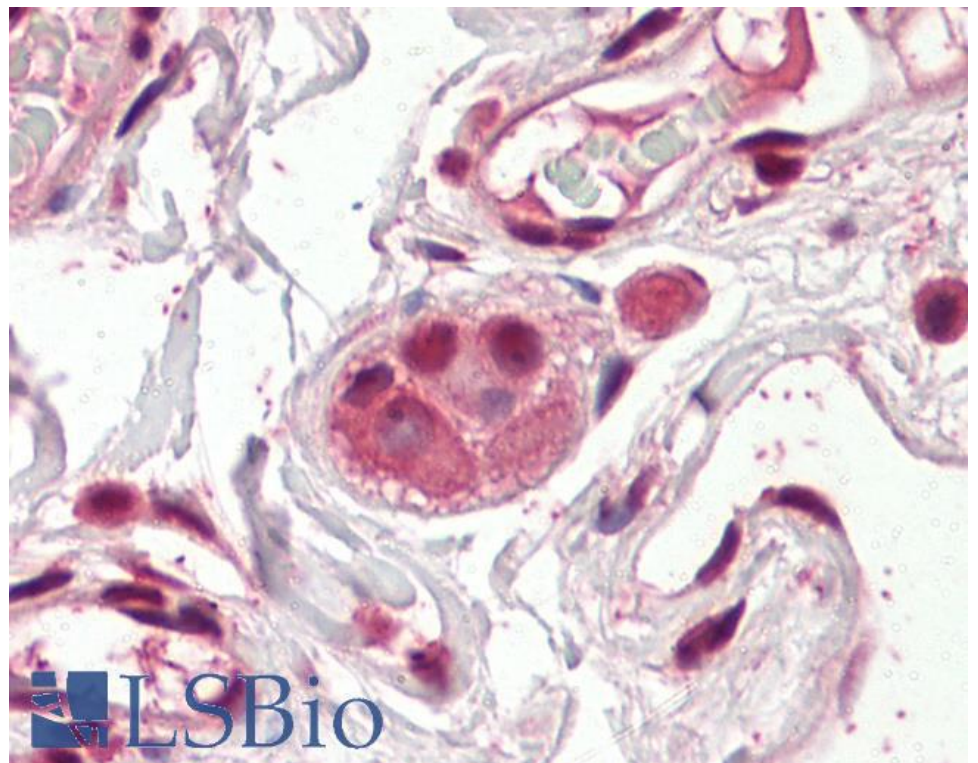
Species Reactivity

Tested: Human

Expected from sequence similarity: Human, Mouse, Rat



EB10957 (0.3 μ g/ml) staining of Human Cerebral Cortex lysate (35 μ g protein in RIPA buffer). Primary incubation was 1 hour. Detected by chemiluminescence.



EB10957 (3.75 μ g/ml) staining of paraffin embedded Human Colon. Steamed antigen retrieval with citrate buffer pH 6, AP-staining.