



UK Office

Everest Biotech Ltd

Cherwell Innovation Centre
77 Heyford Park
Upper Heyford
Oxfordshire
OX25 5HD
UK

Enquiries:

info@everestbiotech.com

Sales:

sales@everestbiotech.com

Tech support:

support@everestbiotech.com

Tel: +44 (0)1869 238326

www.everestbiotech.com

**Research Use Only. Not for
diagnostic or therapeutic use.**

EB08070 - Goat Anti-ABHD4 (aa 177 to 187) Antibody

Size: 100µg specific antibody in 200µl



Target Protein

Principal Names: ABHD4, abhydrolase domain containing 4, FLJ12816

Official Symbol: ABHD4

Accession Number(s): NP_071343.2

Human GeneID(s): [63874](#)

Non-Human GeneID(s): 105501 (mouse)

Immunogen

Peptide with sequence C-RPTNPSEIRAP, from the internal region of the protein sequence according to NP_071343.2.

Please note the [peptide](#) is available for sale.

Purification and Storage

Purified from goat serum by ammonium sulphate precipitation followed by antigen affinity chromatography using the immunizing peptide.

Supplied at 0.5 mg/ml in Tris saline, 0.02% sodium azide, pH7.3 with 0.5% bovine serum albumin.

Aliquot and store at -20°C. Minimize freezing and thawing.

Applications Tested

Peptide ELISA: antibody detection limit dilution 1:4000.

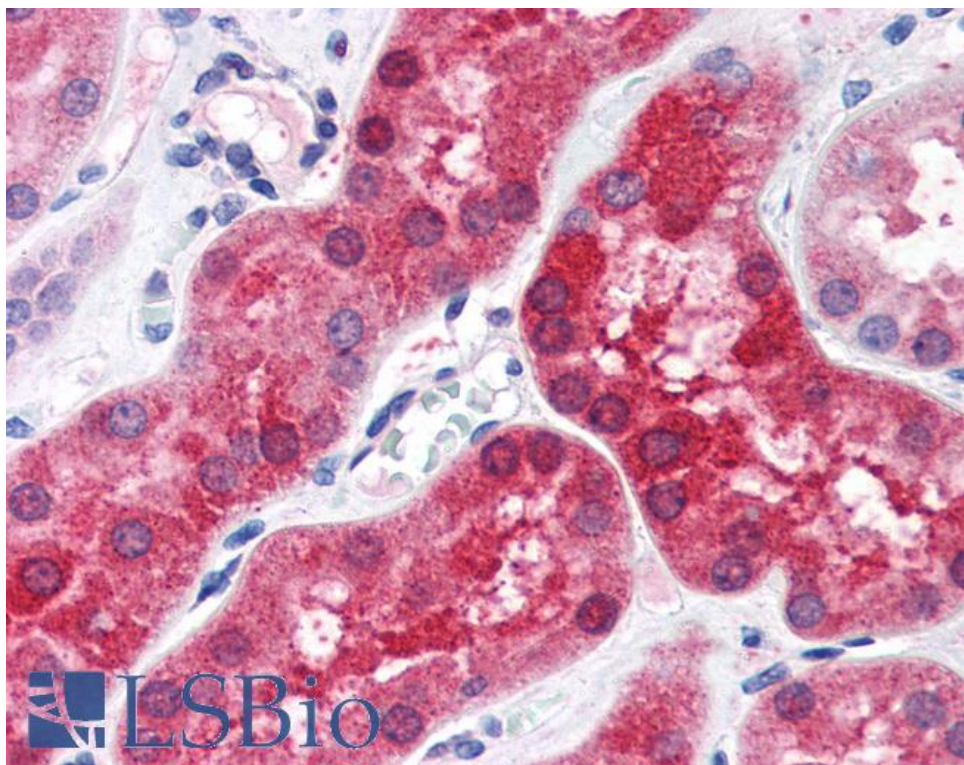
Western blot: Preliminary experiments gave an approx 48kDa band in Human Brain (Cerebellum, Cerebral Cortex and Frontal Cortex) lysates after 1µg/ml antibody staining. Please note that currently we cannot find an explanation in the literature for the band we observe given the calculated size of 38.8kDa according to NP_071343.2. The 48kDa band was successfully blocked by incubation with the immunizing peptide.

IHC: Paraffin embedded Human Kidney. Recommended concentration: 3.75µg/ml.

Species Reactivity

Tested: Human

Expected from sequence similarity: Human, Mouse, Dog



EB08070 (3.75µg/ml) staining of paraffin embedded Human Kidney. Steamed antigen retrieval with citrate buffer pH 6, AP-staining.