



## UK Office

### Everest Biotech Ltd

Cherwell Innovation Centre  
77 Heyford Park  
Upper Heyford  
Oxfordshire  
OX25 5HD  
UK

Enquiries:

[info@everestbiotech.com](mailto:info@everestbiotech.com)

Sales:

[sales@everestbiotech.com](mailto:sales@everestbiotech.com)

Tech support:

[support@everestbiotech.com](mailto:support@everestbiotech.com)

Tel: +44 (0)1869 238326

[www.everestbiotech.com](http://www.everestbiotech.com)

**Research Use Only. Not for  
diagnostic or therapeutic use.**

## EB05736 - Goat Anti-ABCB9 / TAPL Antibody

Size: 100µg specific antibody in 200µl



### Target Protein

**Principal Names:** ABCB9, ATP-binding cassette, sub-family B (MDR/TAP), member 9, TAPL, KIAA1520, EST122234

**Official Symbol:** ABCB9

**Accession Number(s):** NP\_062570.1; NP\_062571.1; NP\_982269.1

**Human GeneID(s):** [23457](#)

**Important Comments:** This antibody is expected to recognise both human isoforms of this protein (as represented by NP\_062570.1, NP\_062571.1 and NP\_982269.1). Variants (NP\_062571.1; NP\_982269.1) encode the same isoform.

### Immunogen

Peptide with sequence C-GHNEPVANGSHKA, from the C Terminus of the protein sequence according to NP\_062570.1; NP\_062571.1; NP\_982269.1.

Please note the [peptide](#) is available for sale.

### Purification and Storage

Purified from goat serum by ammonium sulphate precipitation followed by antigen affinity chromatography using the immunizing peptide.

Supplied at 0.5 mg/ml in Tris saline, 0.02% sodium azide, pH7.3 with 0.5% bovine serum albumin.

Aliquot and store at -20°C. Minimize freezing and thawing.

### Applications Tested

**Peptide ELISA:** antibody detection limit dilution 1:64000.

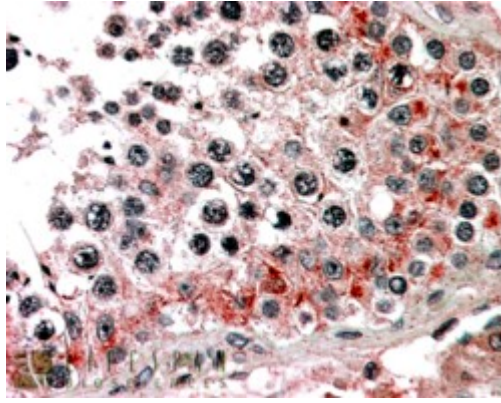
**Western blot:** Preliminary experiments gave no signal but low background in human brain and liver lysates at up to 1µg/ml. We would appreciate any feedback from people in the field - have any results been reported with other antibodies/lysates?

**IHC:** In paraffin embedded Human Testis shows vesiculate cytoplasm staining of primary spermatocytes. Recommended concentration, 3-5µg/ml.

### Species Reactivity

**Tested:** Human

**Expected from sequence similarity:** Human



EB05736 (3.8µg/ml) staining of paraffin embedded Human Testis. Steamed antigen retrieval with citrate buffer pH 6, AP-staining.